

[Go to Main Page](#)

Imperial Valley

Statistics

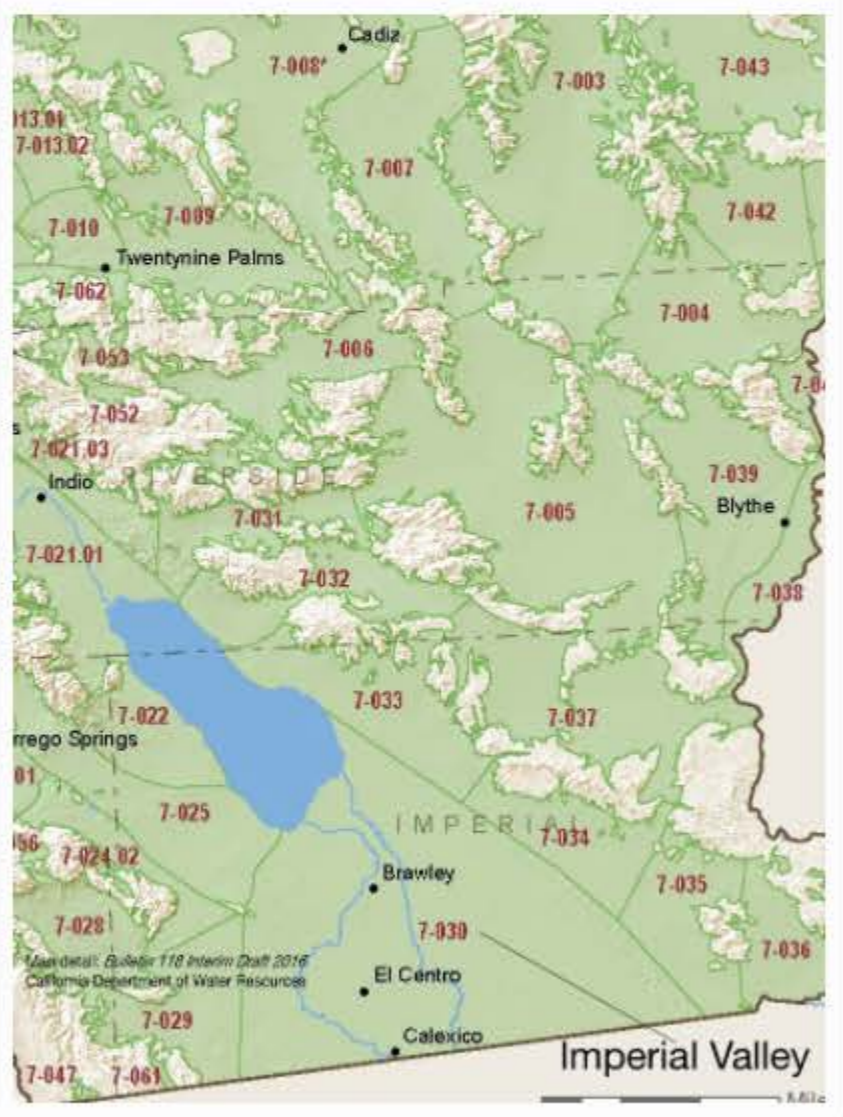
- Basin Name: Imperial Valley
- Basin Number: 7-030
- SGMA Basin Priority: Very Low
- Critically Overdrafted: No
- Hydrologic Region Name: Colorado River
- Counties: Imperial
- Adjacent Basins:
 - Amos Valley 7-034
 - East Salton Sea 7-033
 - Coyote Wells Valley 7-029
 - Ocotillo-Clark Valley 7-025

★ Track this basin

At-A-Glance

Located in California's hydrologic region, the Imperial Valley is 957,774 acres in size. This Very Low priority basin is home to an estimated 164,037 people (2010 value), which have been at a rate of 29.98.

Imperial Valley is a(n) basin with approximately 71 wells, of which approximately 8 are water supply wells. Groundwater accounts for approximately 0 percent of the basin's water supply.



Basin Notes

2002: Bulletin 118 basin description