

SOLAR DEVELOPMENT ON AGRICULTURAL LAND WORKSHOP

County of Imperial



2011

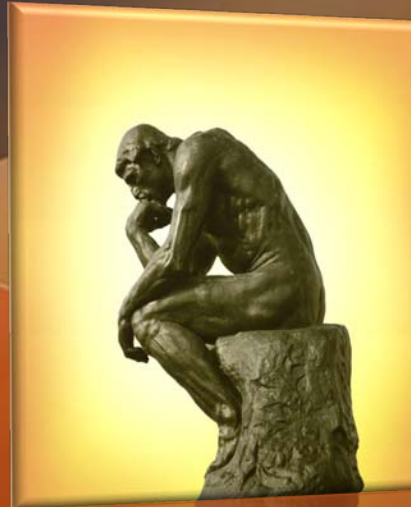
PURPOSE OF WORKSHOP

To solicit information from the public in regard to potential effects of solar projects on agricultural land.

Discussion Topics

✓ Land Use Compatibility

- *Right to Farm*
- *Dust*
- *Conversion*
 - *Temporary*
 - *Permanent*
- *Visual/Aesthetics*
- *Water*
- *Power Lines*



✓ Economic Impact to the Valley

- *Direct and Indirect Effects*
- *Employment*
- ✓ *Fiscal Impact on County Services*

AGRICULTURE

❖ Total Farm Acres in Imperial Valley: 540,942
(Dept. of Conservation data)

❖ Imperial County has:

2.7% of land mass in California
(Entire County including unfarmed desert areas)

4.4 % of the total farm acreage in California
(Dept. of Conservation data)



AGRICULTURE VALUE

❖ 2009 Gross Value of Direct Agricultural Production:
\$1.45 billion

(Imperial County Agricultural Commissioners 2009 crop report)

❖ Gross Value of Direct Agricultural Production:
\$2,686/acre annually

(2009 Crop report and Dept. of Conservation data. Doesn't include indirect value to the economy)



AGRICULTURAL VALUE

CONTINUED

- ❖ Gross value of 1,000 acres of produce (vegetables)
\$6,050,000 per year

(Imperial County Agricultural Commissioner 2009 Crop Report)

- ❖ Gross value of 1,000 acres of field crops (alfalfa, bermuda grass, etc.) \$885,000 per year

(Imperial County Agricultural Commissioner 2009 Crop Report)



AGRICULTURAL JOBS

- ❖ Direct Farm Jobs

10,800 jobs= 19.7% of total Imperial County employment

(Employment Development Dept. data December 2010)

- ❖ Direct Plus Indirect Jobs Attributed to Agriculture
32,000 jobs

(Estimate based on crop report and IMPLAN multipliers)

- ❖ Direct Farm Jobs per 1,000 acre of Produce
15 full-time year-round, 500 during harvest(approx 5-6 mths/yr)

- ❖ Direct Farm Jobs per 1,000 acres of Field Crops
5 full-time

(Anecdotal information from Ag industry)



SOLAR TYPES



- ❖ Thermal – Stores solar energy to be used for heating various items.



- ❖ Photo Voltaic – Converts solar energy directly into electricity

SOLAR DATA

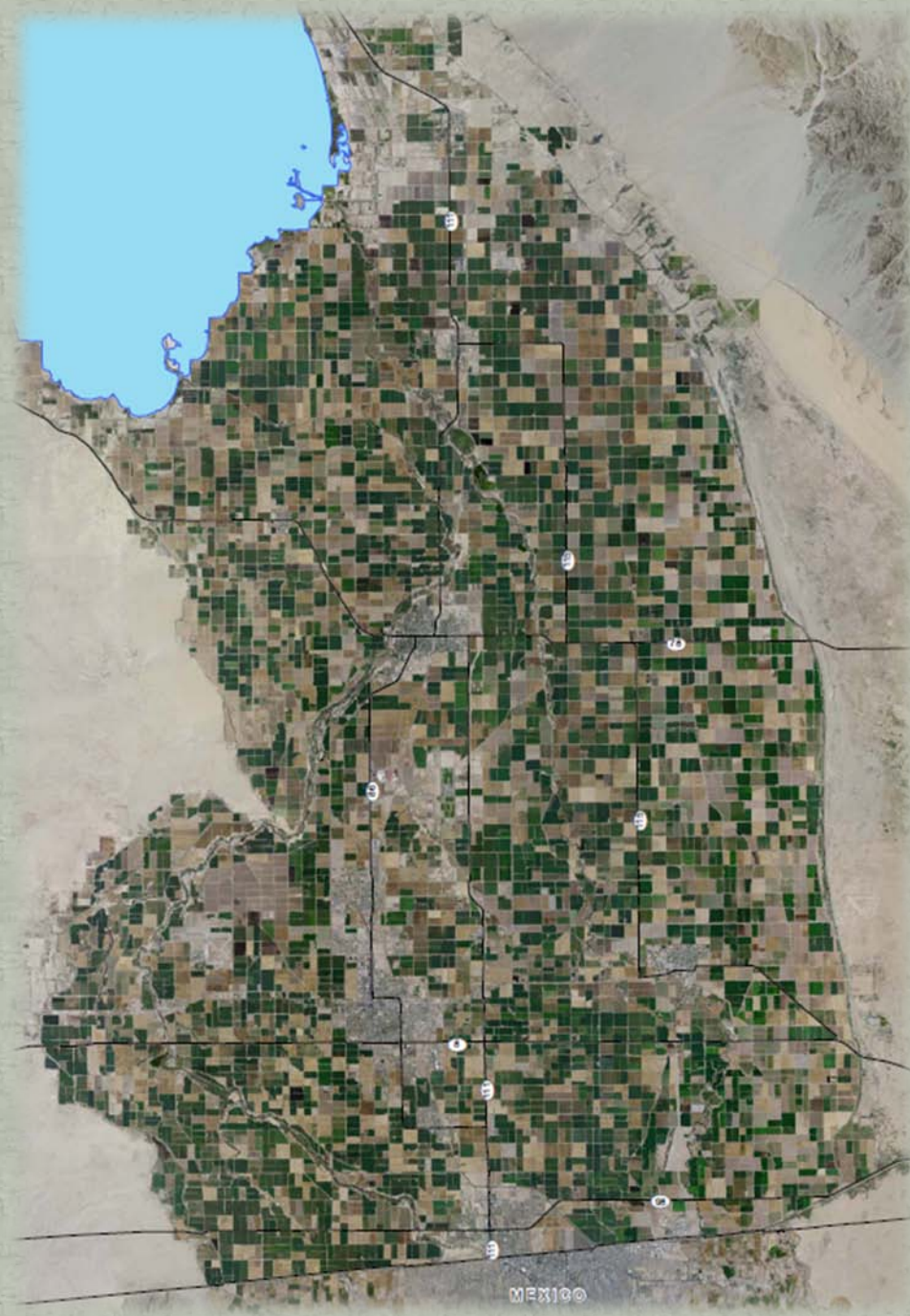
Based on Proposed Projects Submitted to Date

- ❖ 10,000 acres in solar farms proposed in agricultural land (currently 16 permit applications in process)
- ❖ An average of 5-6 permanent jobs per project
- ❖ An estimated 370 temporary construction jobs per project averaging 6-12 months
- ❖ Total 1,500 megawatts of energy proposed



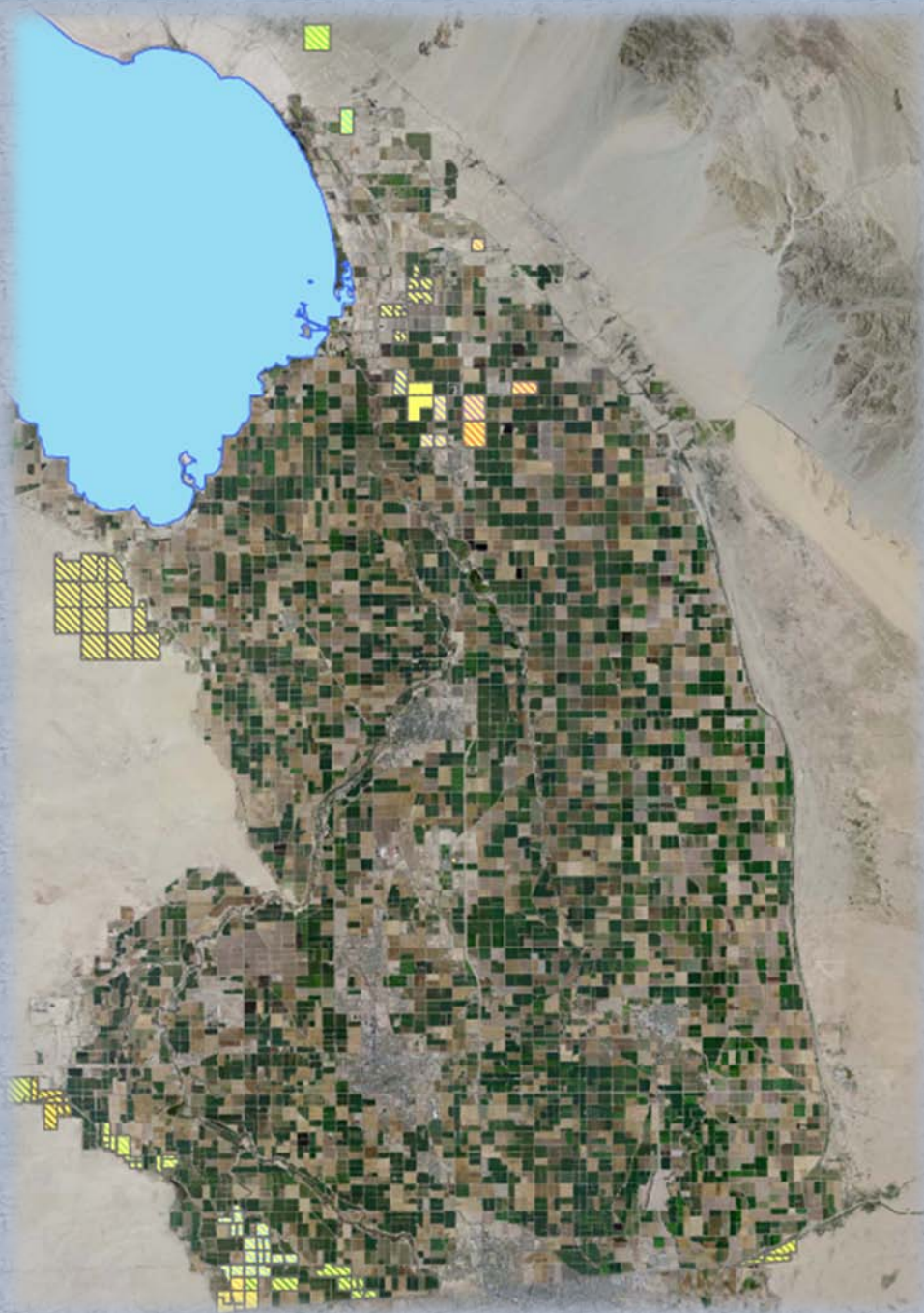
F
A
R
M

L
A
N
D



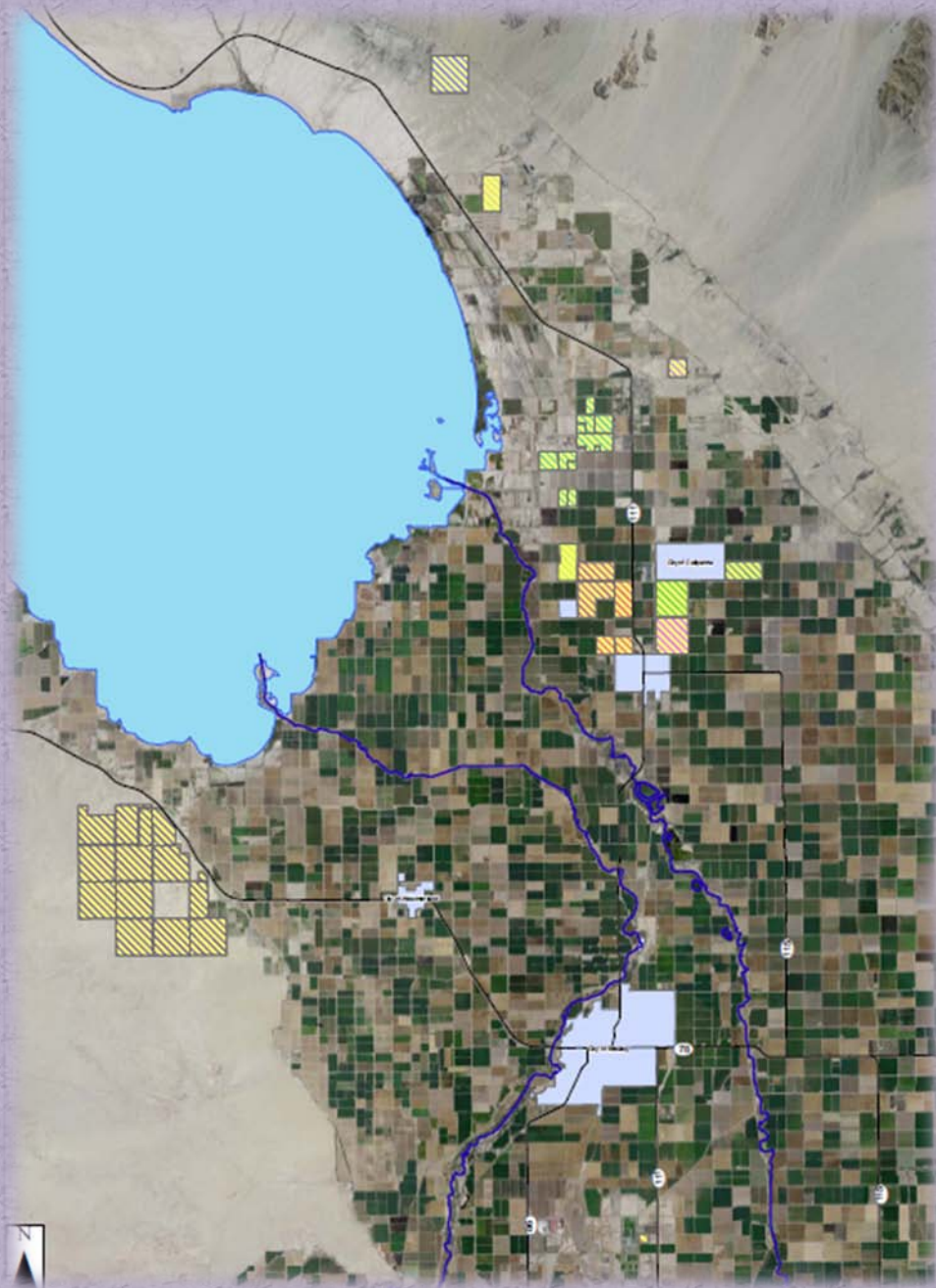
MEX100

S
O
L
A
R



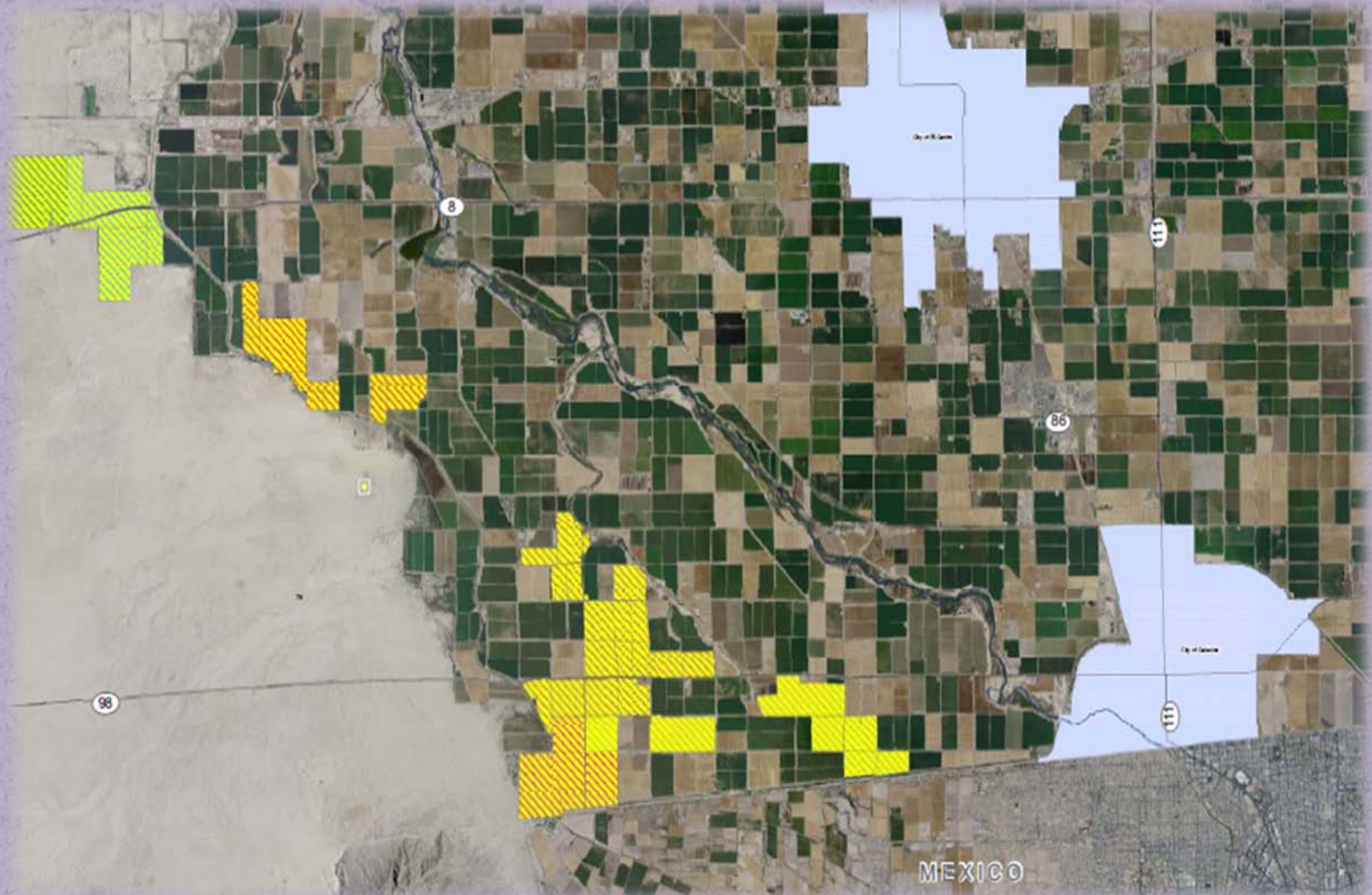
P
R
O
J
E
C
T
S

N
O
R
T
H

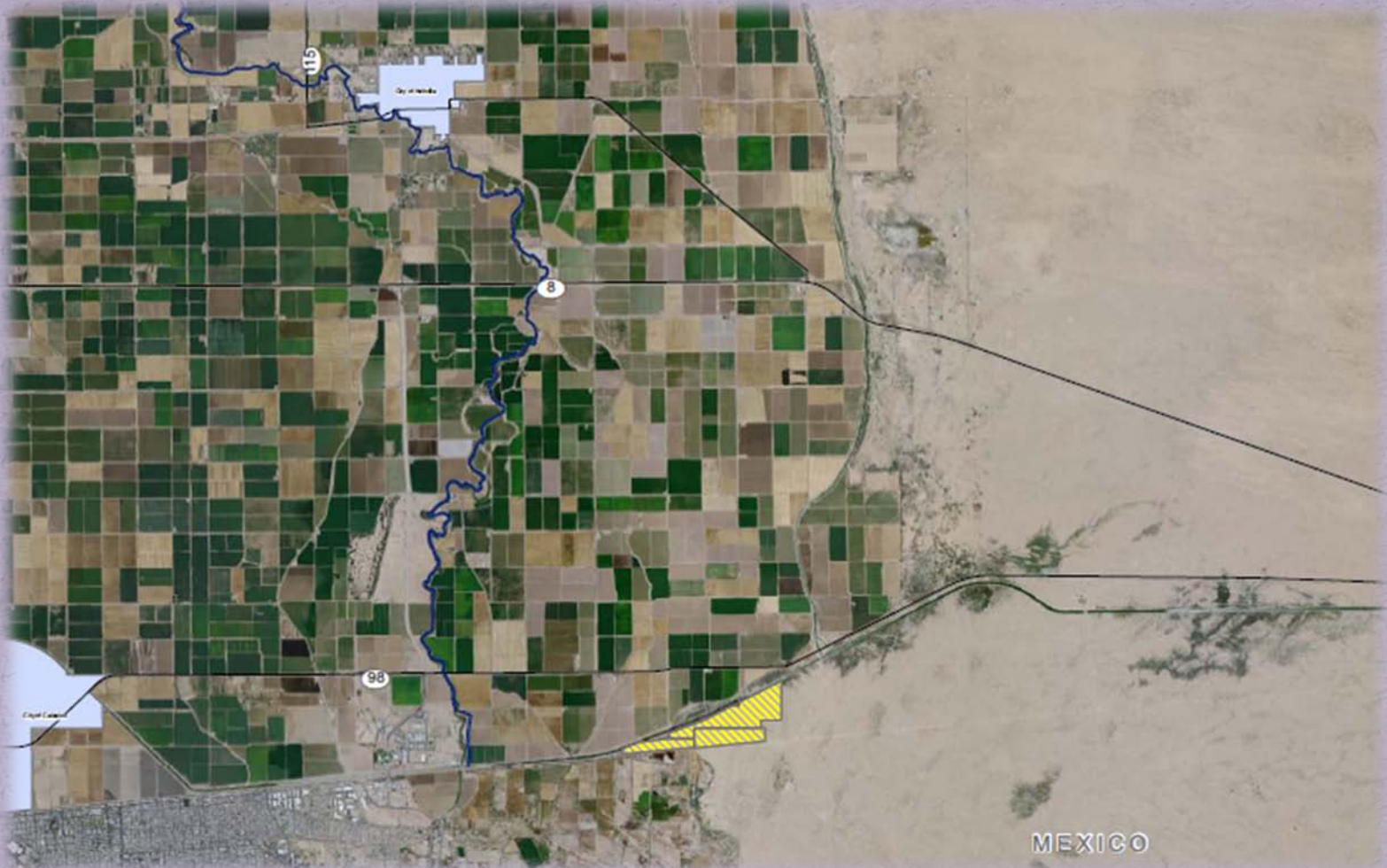


E
N
D

SOUTH IMPERIAL COUNTY



EAST MESA



COMPARISON



The Imperial Valley has 540,942 acres in farmland.

Applicants have proposed approximately 10,000 acres of solar farms in Ag land.

Currently Solar farms are proposing an estimated 2% of land designated as agriculture.

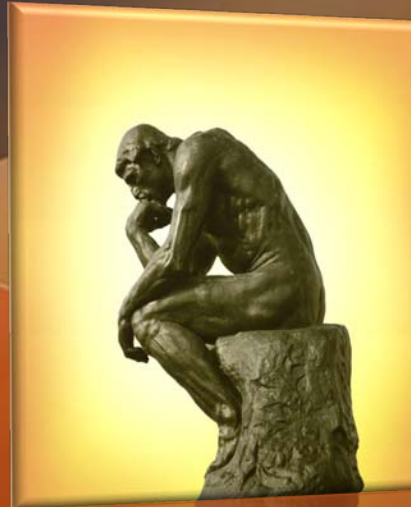
Projects already approved encompass 320 acres.



Discussion Topics

✓ Land Use Compatibility

- *Right to Farm*
- *Dust*
- *Conversion*
 - *Temporary*
 - *Permanent*
- *Visual/Aesthetics*
- *Water*
- *Power Lines*



✓ Economic Impact to the Valley

- *Direct and Indirect Effects*
- *Employment*
- ✓ *Fiscal Impact on County Services*

THANK YOU!

Any questions or concerns, please contact:

Patricia Valenzuela, Planner III

760-482-4236 ext. 4320

patriciavalenzuela@co.imperial.ca.us

Information may also be found at:

www.icpds.com

