

IMPERIAL COUNTY RENEWABLE ENERGY AND TRANSMISSION ELEMENT UPDATE COMMUNITY MEETINGS

March 27, 2014

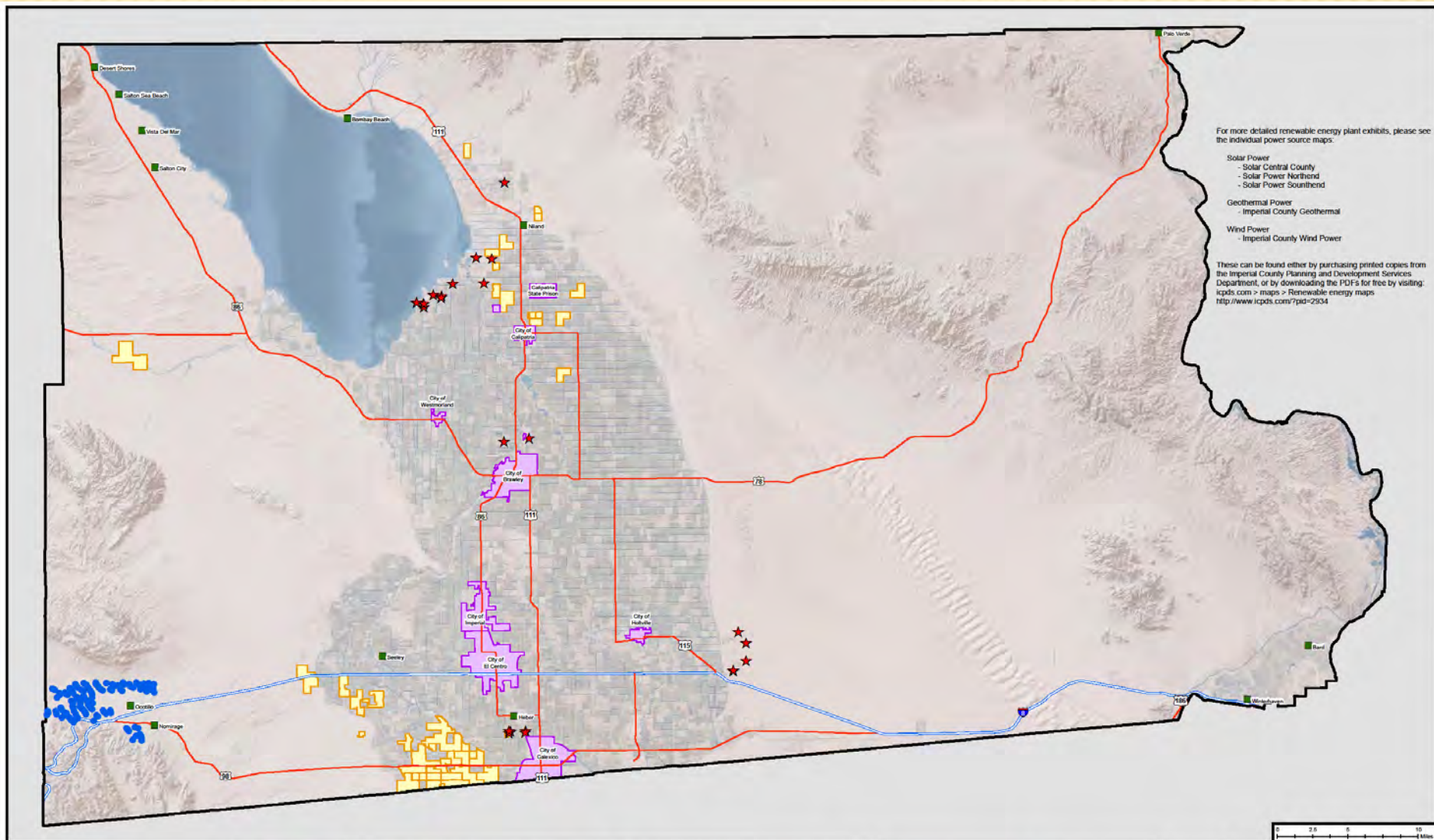


MEETING PURPOSE & AGENDA OVERVIEW

- ✖ History of Renewable Energy in Imperial County
- ✖ Goals and Objectives
- ✖ Environmental Baseline Studies
- ✖ Methodology
- ✖ Project Process and Milestones
- ✖ Group Discussion

IMPERIAL COUNTY PROJECTS

- 36 CUPs submitted for Solar, Geothermal, Wind and Ethanol Projects (25 CUPs approved)
- 26 EIRs; 7 MNDs; 2 NDs and 1 TBD (to be determined)
- Major issues include land use, agriculture, biology and cultural resources
- 2,271.70 MWs Approved
- Solar on 21,933.65 acres of agricultural land



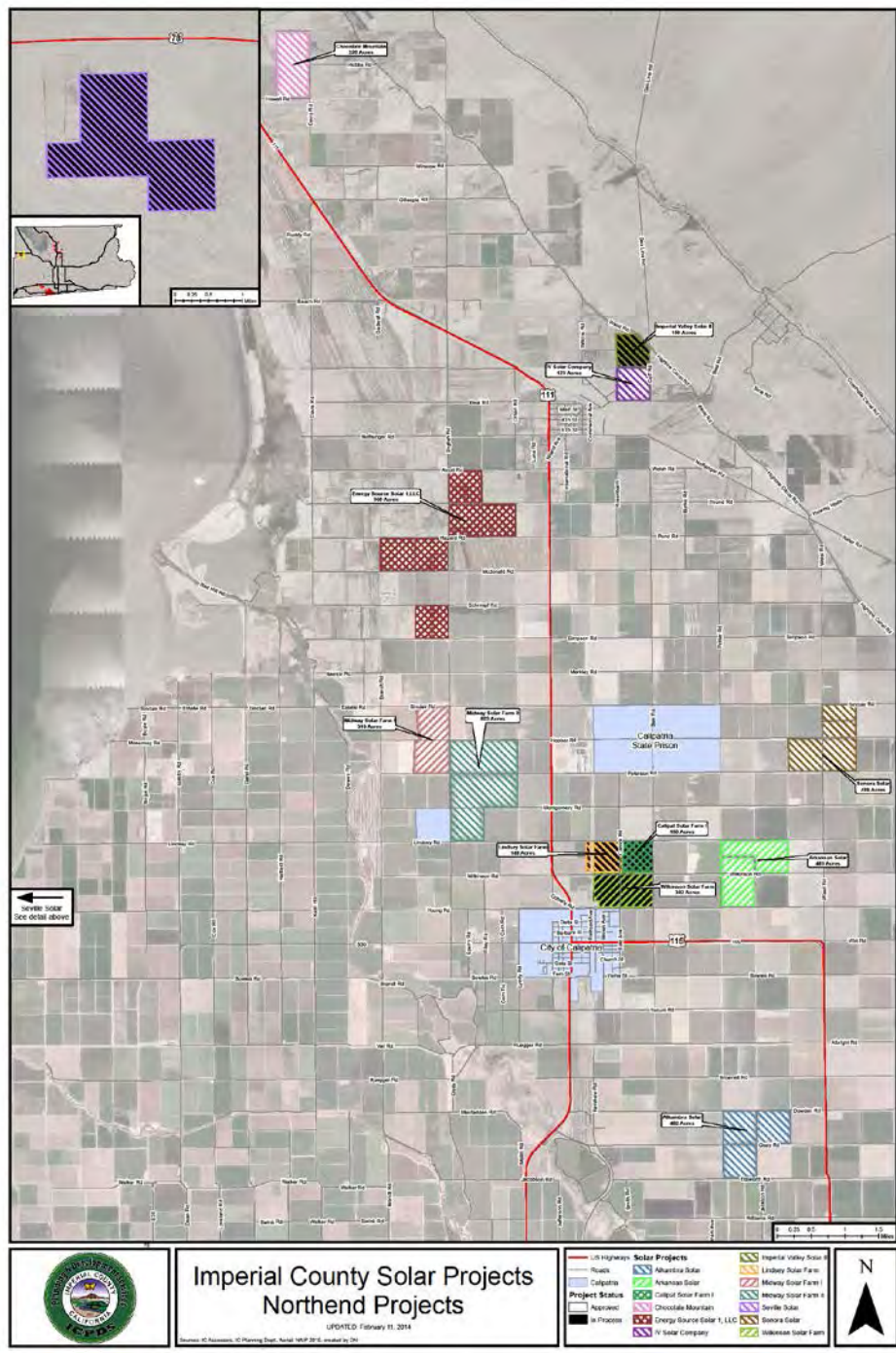
Imperial County Renewable Energy Power Plant Locations Index

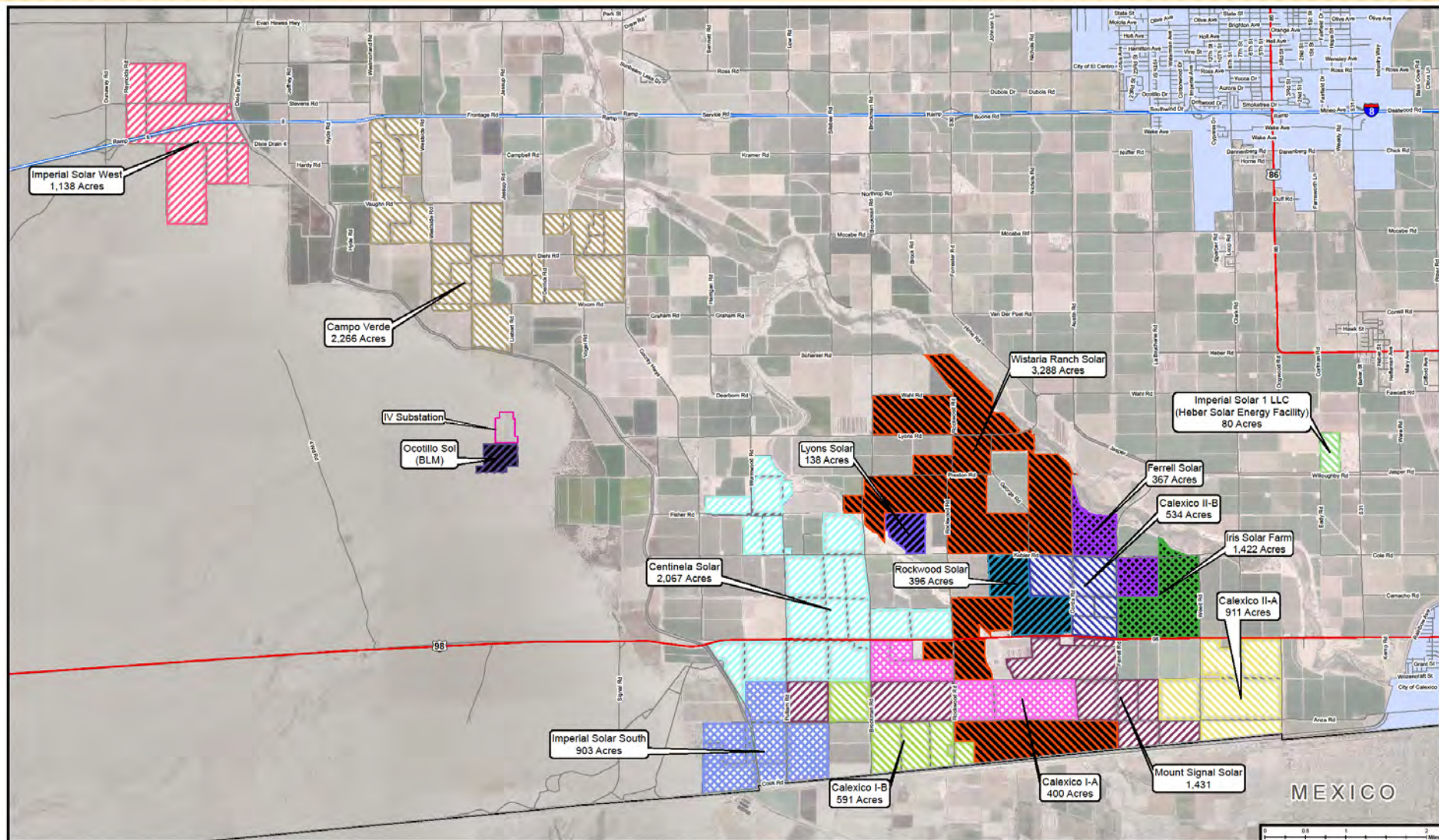
UPDATED: November 1, 2013

Source: IC Assessment, IC Planning Dept., Aerial NAIP 2012 created by DRI

- | | |
|--|--|
| — US Highways | ■ Town Sites |
| — Interstate | ★ Geothermal Plants |
| Cities | ● Wind Turbines |
| Solar Farms | |





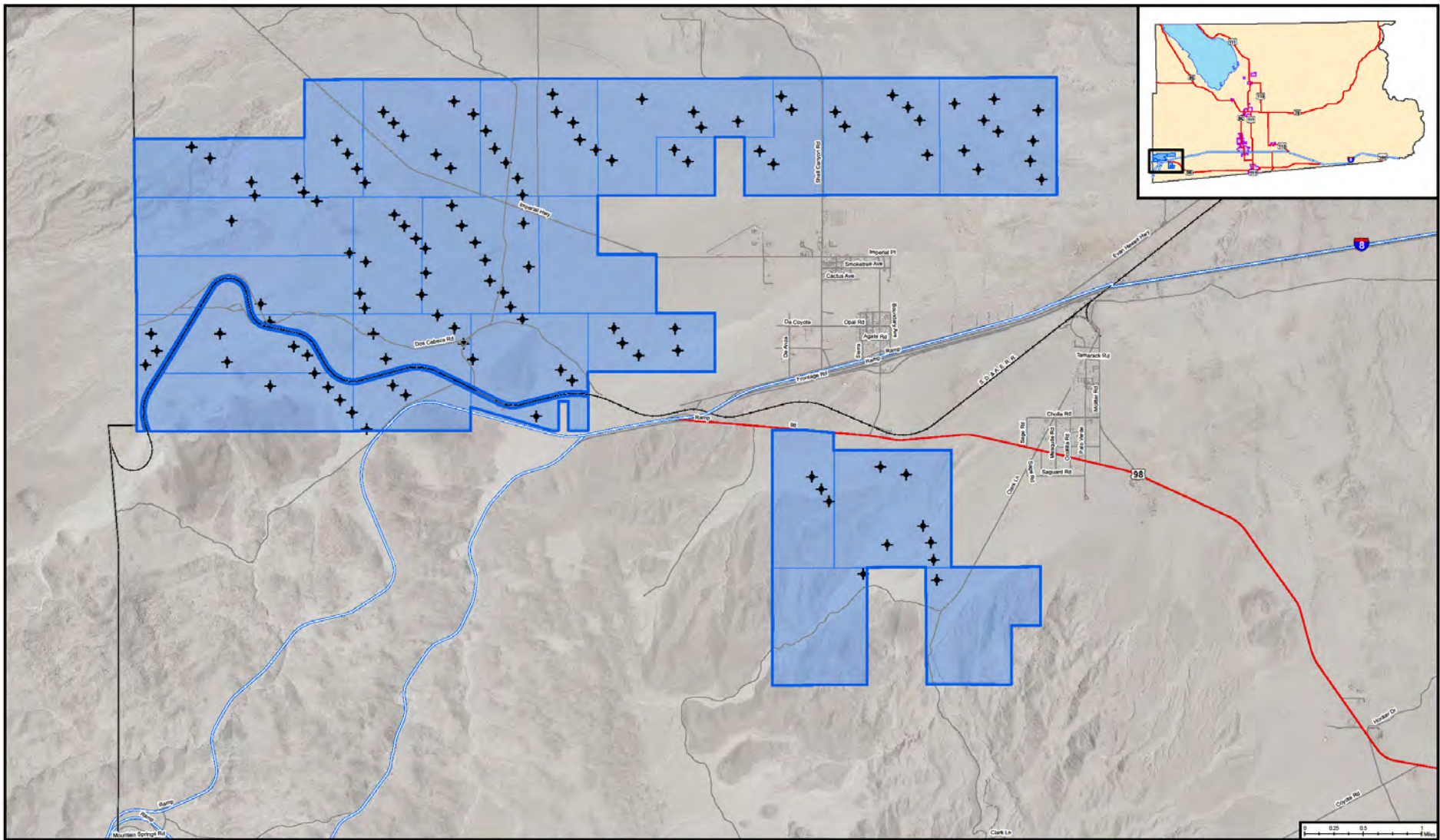


Imperial County Solar Farm Projects Southend Projects

UPDATED: October 25, 2013

Sources: IC Assessors, IC Planning Dept., Aerial: NAIP 2010, created by DHI

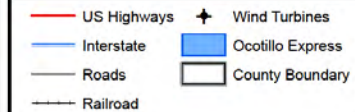




Imperial County Wind Farm Project Pattern Energy, Ocotillo Express Wind Farm

UPDATED: October 31, 2013

Sources: IC Assessors, IC Planning Dept., Aerial: NAMP 2010, created by DHI



GOALS AND OBJECTIVES

- Update the Geothermal/Alternative Energy and Transmission Element
- Develop Implementing Ordinances
- Assure General Plan Internal Consistency
- Provide CEQA Documentation
- Implement Stakeholder Public Outreach Program

KEY TASKS – RENEWABLE ENERGY ELEMENT

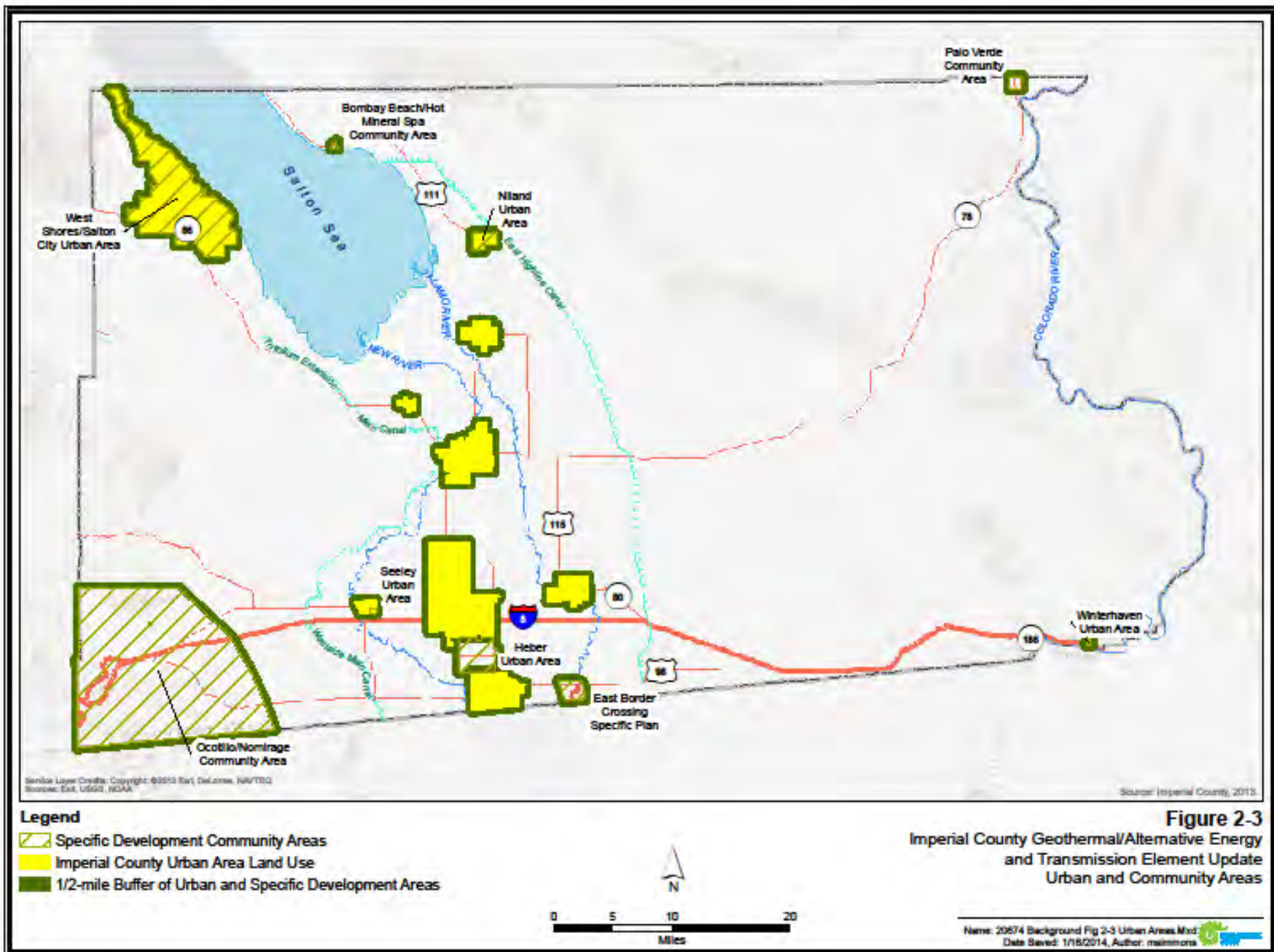
- **Develop Baseline Studies**
- **Review Renewable Energy Strategies**
- **Review Renewable Energy Legislation and Policies**
- **Develop Revised General Plan Element and Implementing Ordinances**
- **Prepare Adequate CEQA Document**

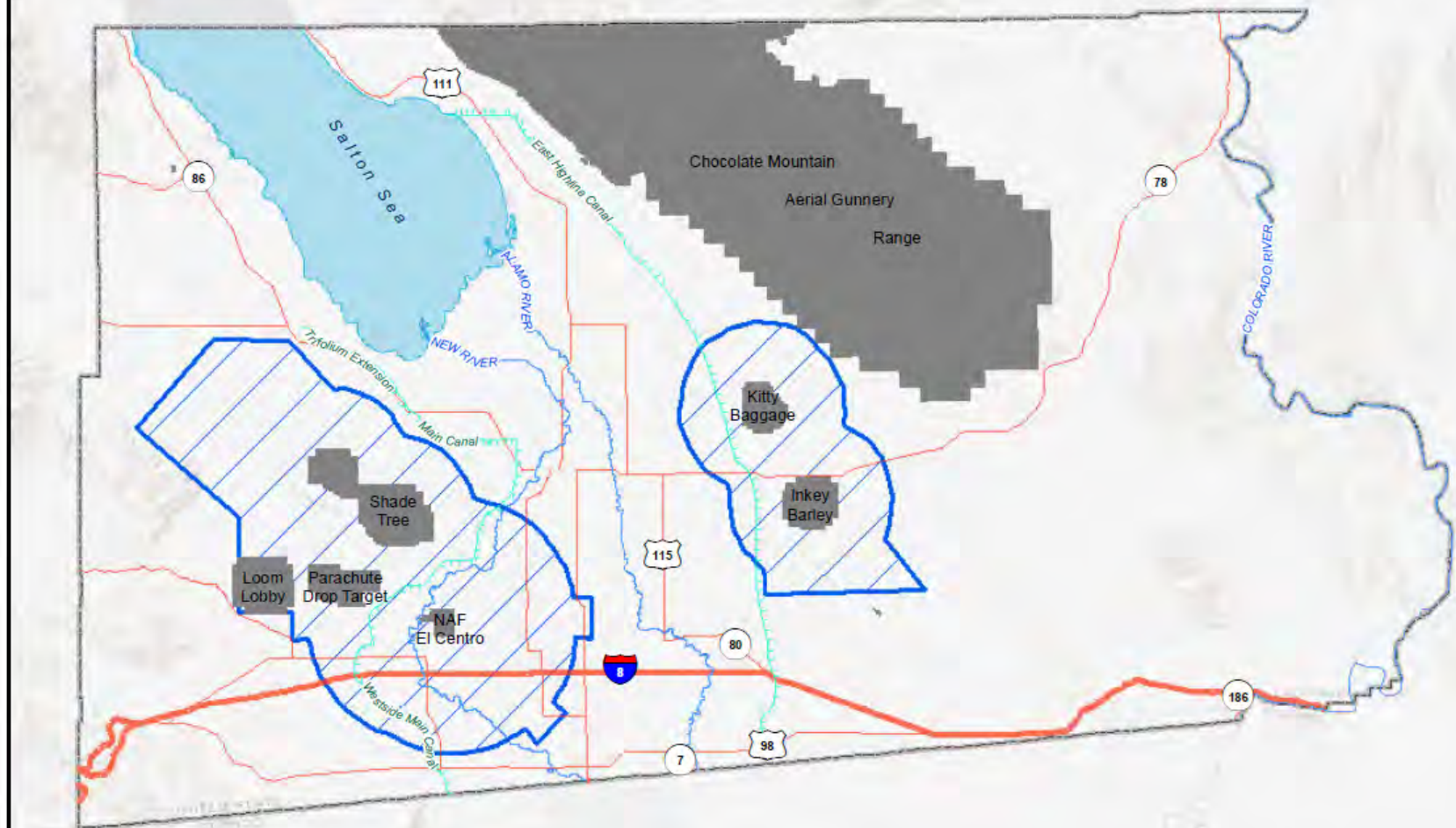
BASELINE ENVIRONMENTAL STUDY

- **Aesthetics and Glare**
- **Agricultural Resources**
- **Air Quality**
- **Biological Resources**
- **Cultural/Archeological Resources**
- **Geology/Soils**
- **Greenhouse Gas Emissions/Climate Change**
- **Hazards and Hazardous Materials**
- **Health Risk Assessment**
- **Hydrology/Water Quality**
- **Land Use**
- **Mineral Resources**
- **Noise**
- **Population and Housing**
- **Public Services**
- **Recreation**
- **Transportation/ Circulation**
- **Utilities and Services**
- **Potential Renewable Energy Generation Suitability Areas**

IMPORTANT ENVIRONMENTAL CHARACTERISTICS

- **Land Use**
 - Community & Urban Areas + ½ -mile
- **Military Facilities and Operations**
 - Military Influence Areas
- **Agricultural Resources**
 - Prime & Statewide Important Farmland
- **Biological Resources**
 - Agency Designated Sensitive Habitats
- **Aesthetic & Visual Resources**
 - Maintenance of Visual Quality as High Value
- **Recreation**
 - Local, State and Federal Parks & Recreation Areas






Service Layer Credits: Copyright: ©2013 Esri, DeLorme, NAVTEQ
Sources: Esri, USGS, NOAA

Source: DataBasi, 2013.

Legend

-  Military Influence Areas Includes:
- Range Military Compatibility Area
 - Inner Horizontal Surface Subzone = 150 ft
 - Conical Surface Subzone = 20 ft to 1 ft
 - Outer Horizontal Surface Subzone = 500 ft
 - Approach-Departure Clearance Surface Subzone = 50 ft to 1 ft

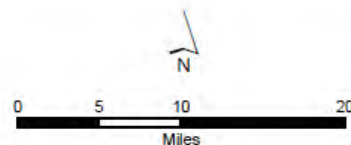
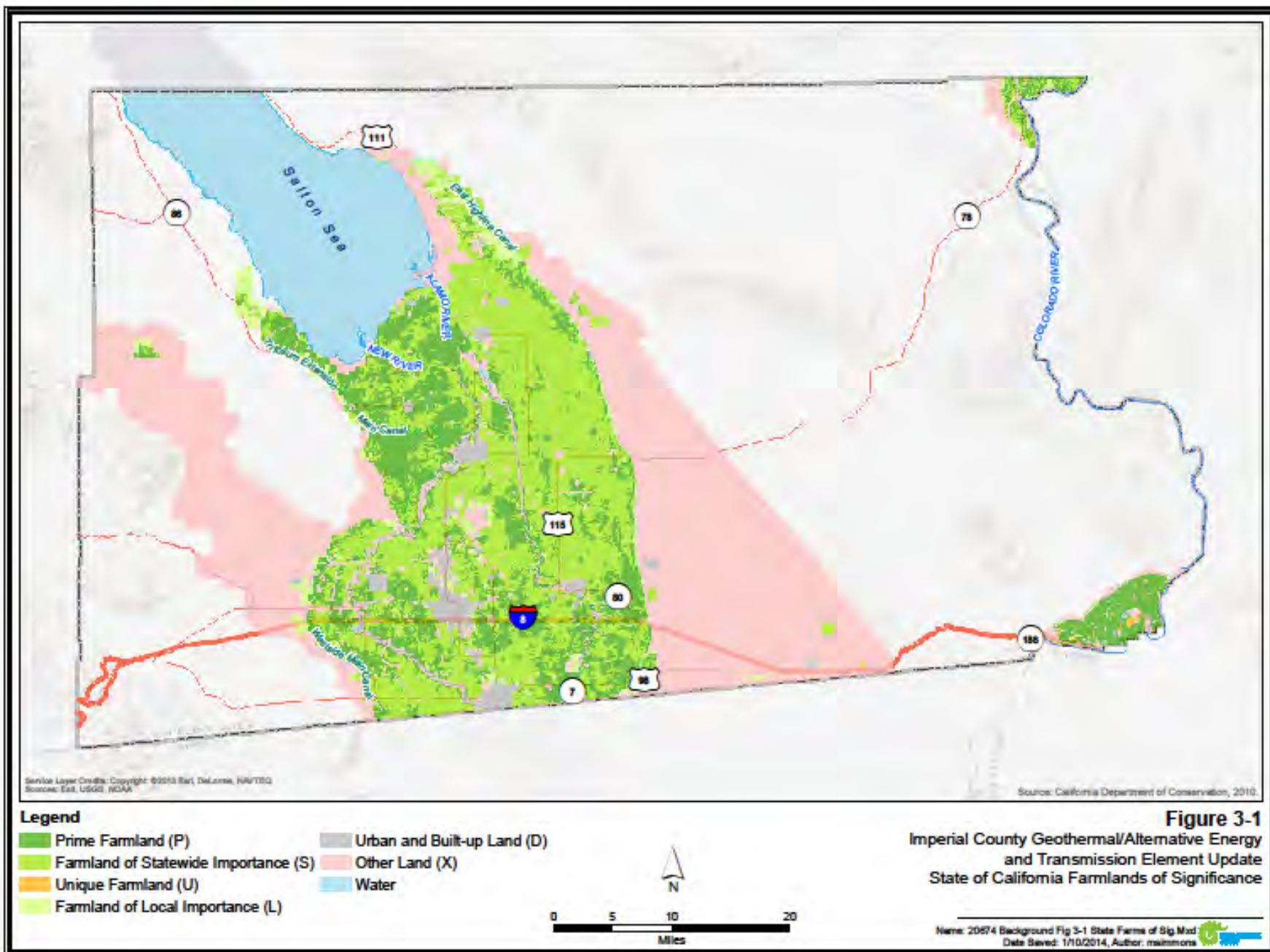


Figure 2-4
Imperial County Geothermal/Alternative Energy
and Transmission Element Update
Military Influence Areas

Name: 20674 Background Fig X-2 Military Areas.Mxd
Date Saved: 3/10/2014, Author: msimmons





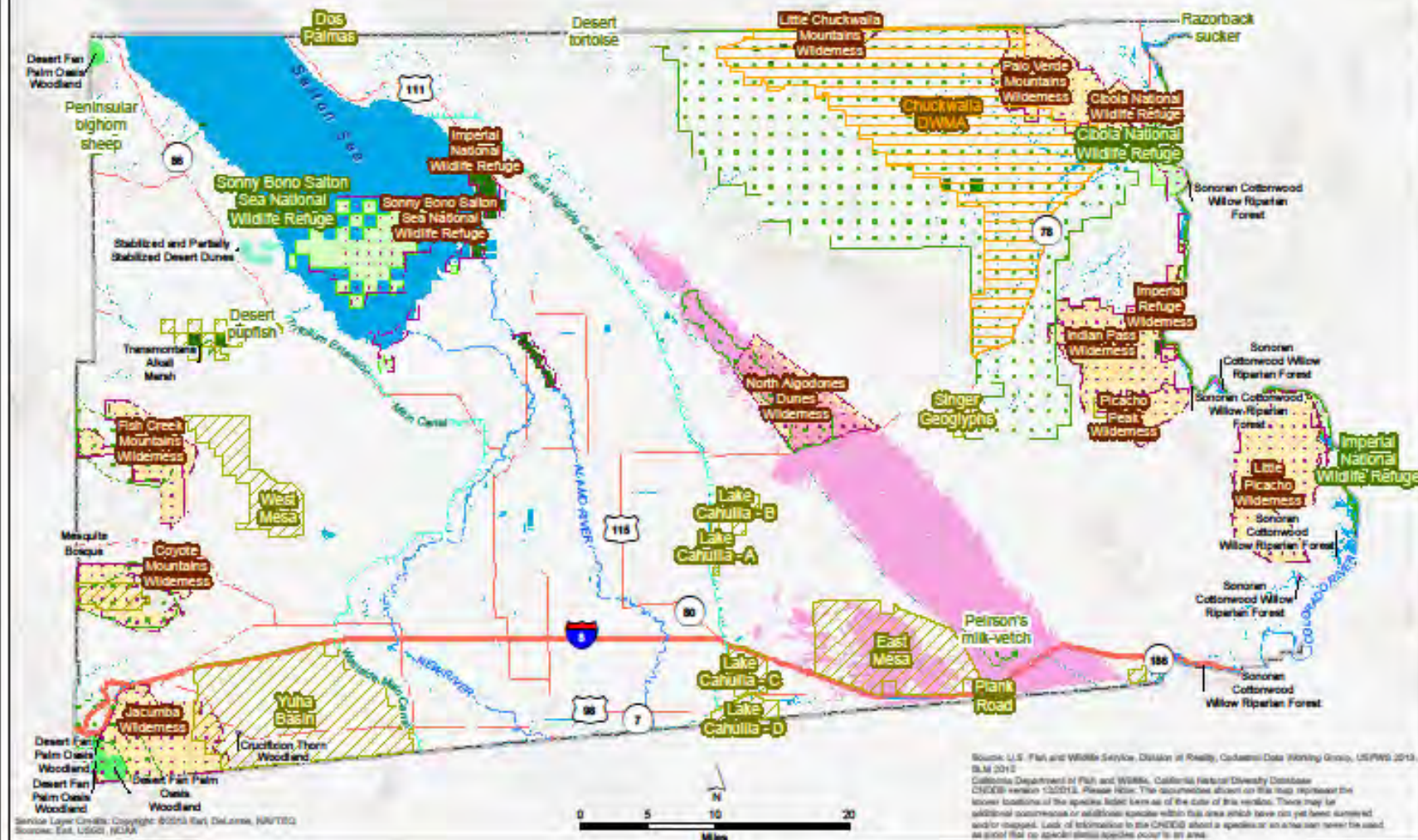
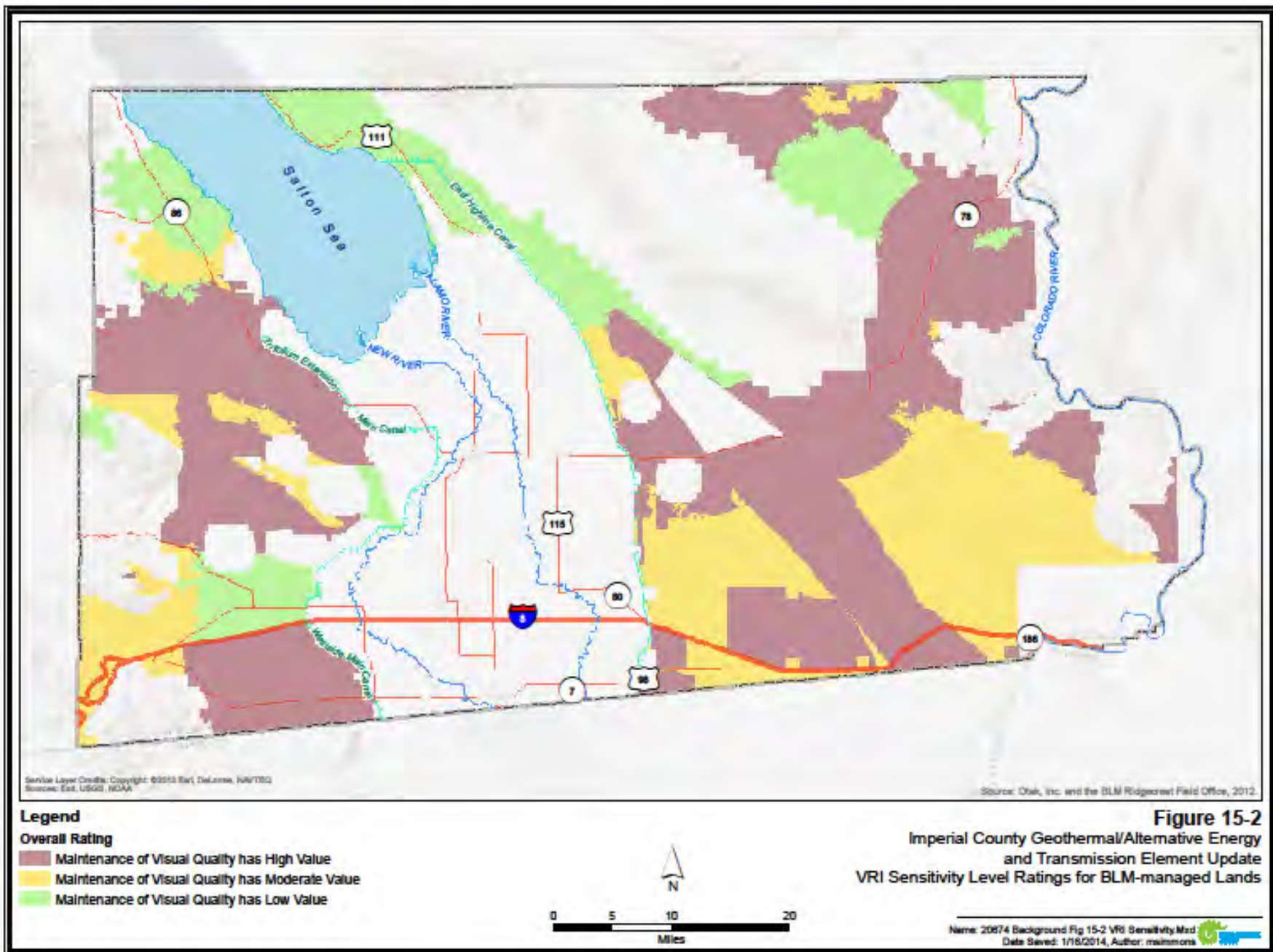
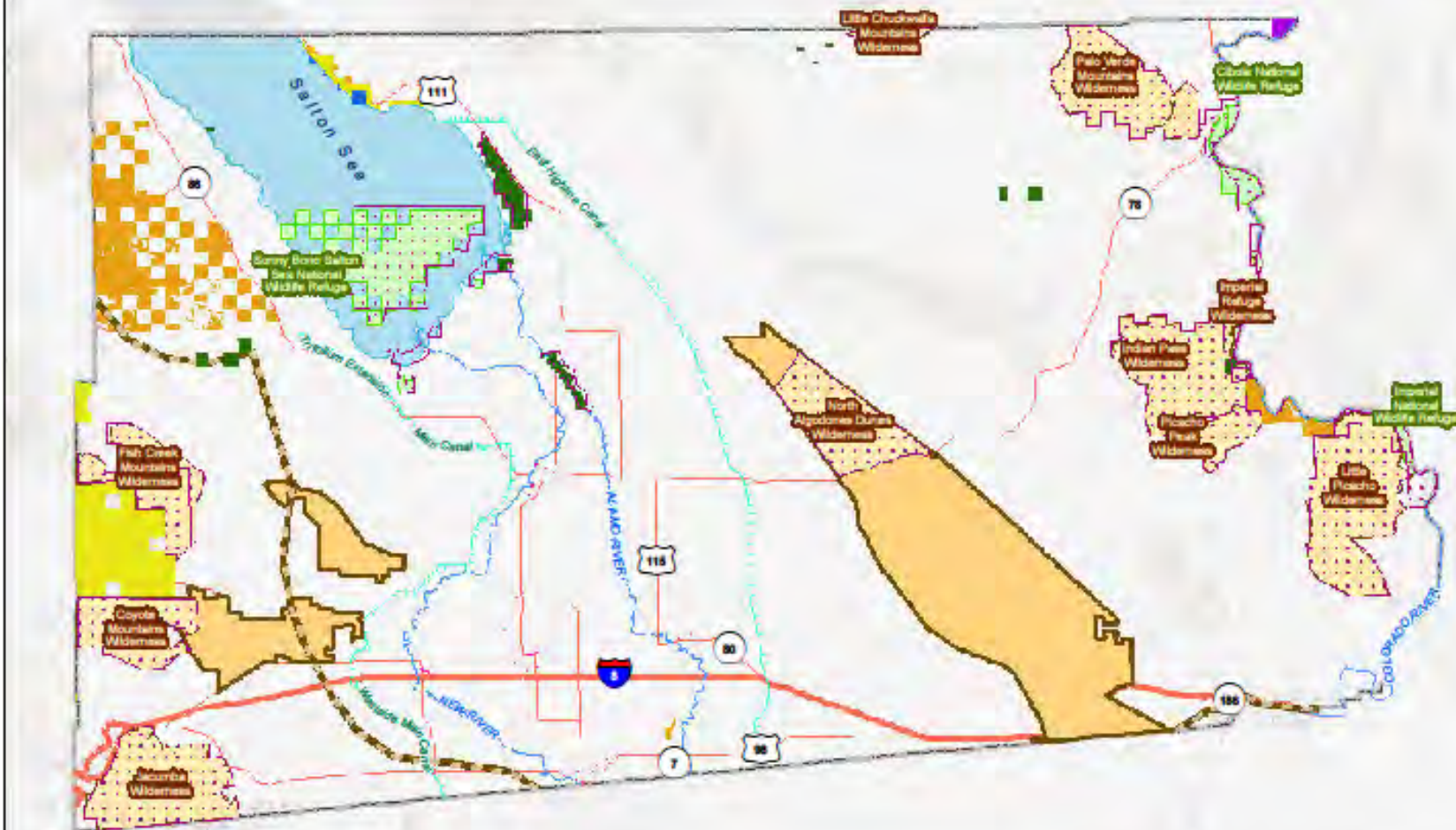


Figure 4-4
Imperial County
 Geothermal/Alternative Energy
 and Transmission Element Update
 Sensitive and Designated Habitat





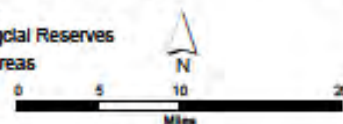
Service Layer Credits: Copyright ©2013 Esri, DeLorme, NAVTEQ
Source: Esri, USGS, NOAA

Source: Conservation Biology Institute, 2012; BLM, U.S. Forest Service, 2005.

Legend

- | | | |
|---|--|--|
| City Park | Regional Park | U.S. Fish & Wildlife Service National Wildlife Refuge |
| County Park | State Park | BLM NLCS Wilderness Areas |
| National Recreation Area | State Recreation Area | CDFW Wildlife Areas & Ecological Reserves |
| Park | Federal Off-highway Vehicle Area | USGS Wilderness & Wildlife Areas |
| | Documented Recreational Trails | |

Figure 16-3
Imperial County Geothermal/Alternative Energy
and Transmission Element Update
Parks and Recreation Areas



Name: 20874 Background Fig 16-3 Parks and Rec.Mxd
Date Saved: 1/15/2014, Author: maimmons

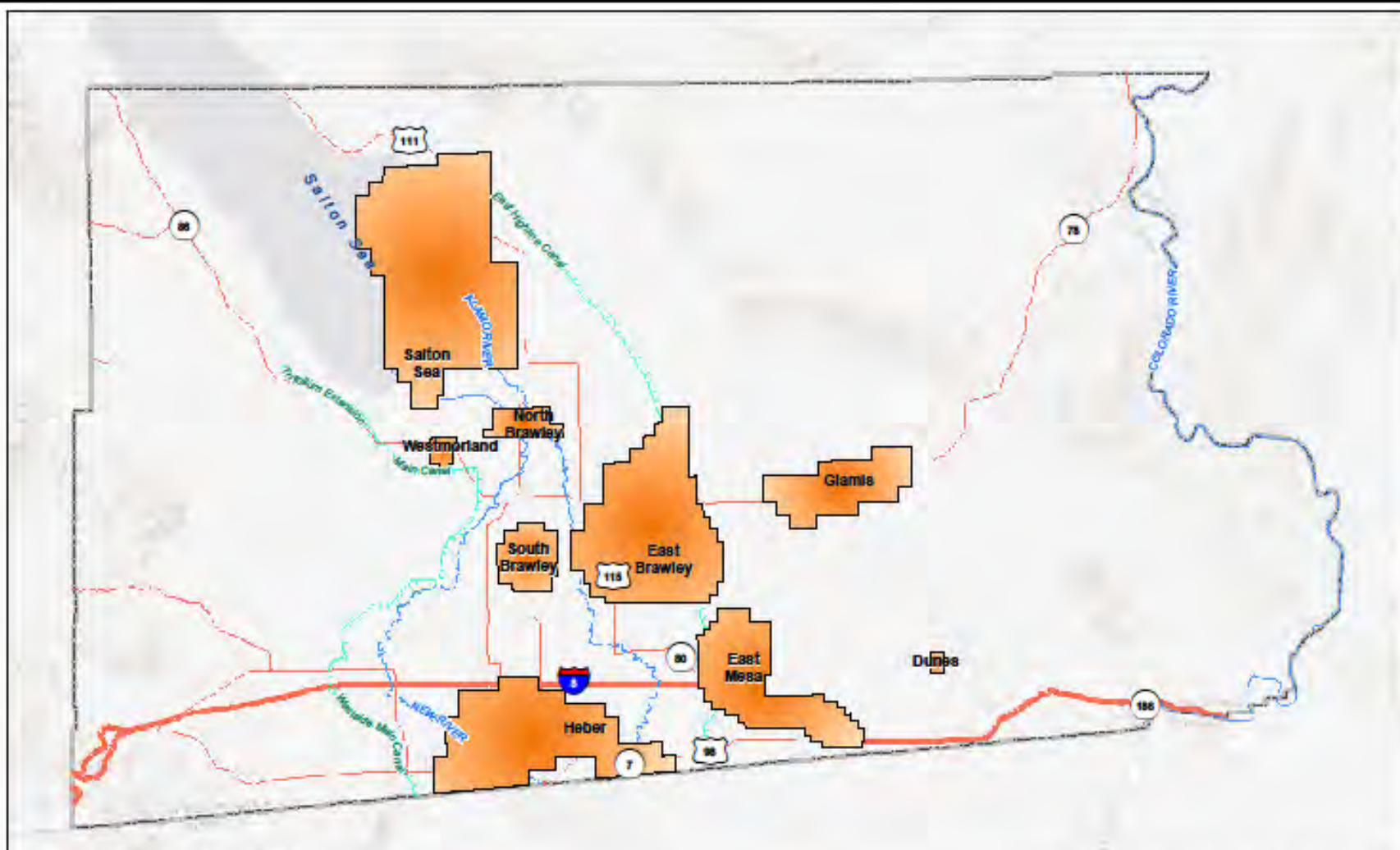
TYPES OF ENERGY PRODUCTION

- Geothermal
- Wind
- Solar
- Concentrated Solar
- Deep Solar Pond
- Hyper-Saline Brine Pond
- Biofuels



IDENTIFY ENERGY PRODUCTION SUITABILITY AREAS

- 1) Highly Suitable
- 2) Suitable
- 3) Potentially Suitable
- 4) Unsuitable
- 5) Highly Unsuitable



Service Layer Credits: Copyright ©2013 Esri, DeLorme, NAVTEQ
Source: Esri, USGS, NOAA

Source: GEO-HEAT CENTER, Oregon Institute of Technology, 2001.

Legend

Known Geothermal Resource Area

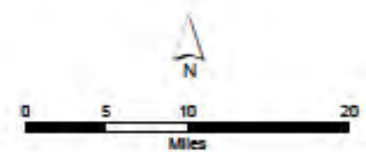
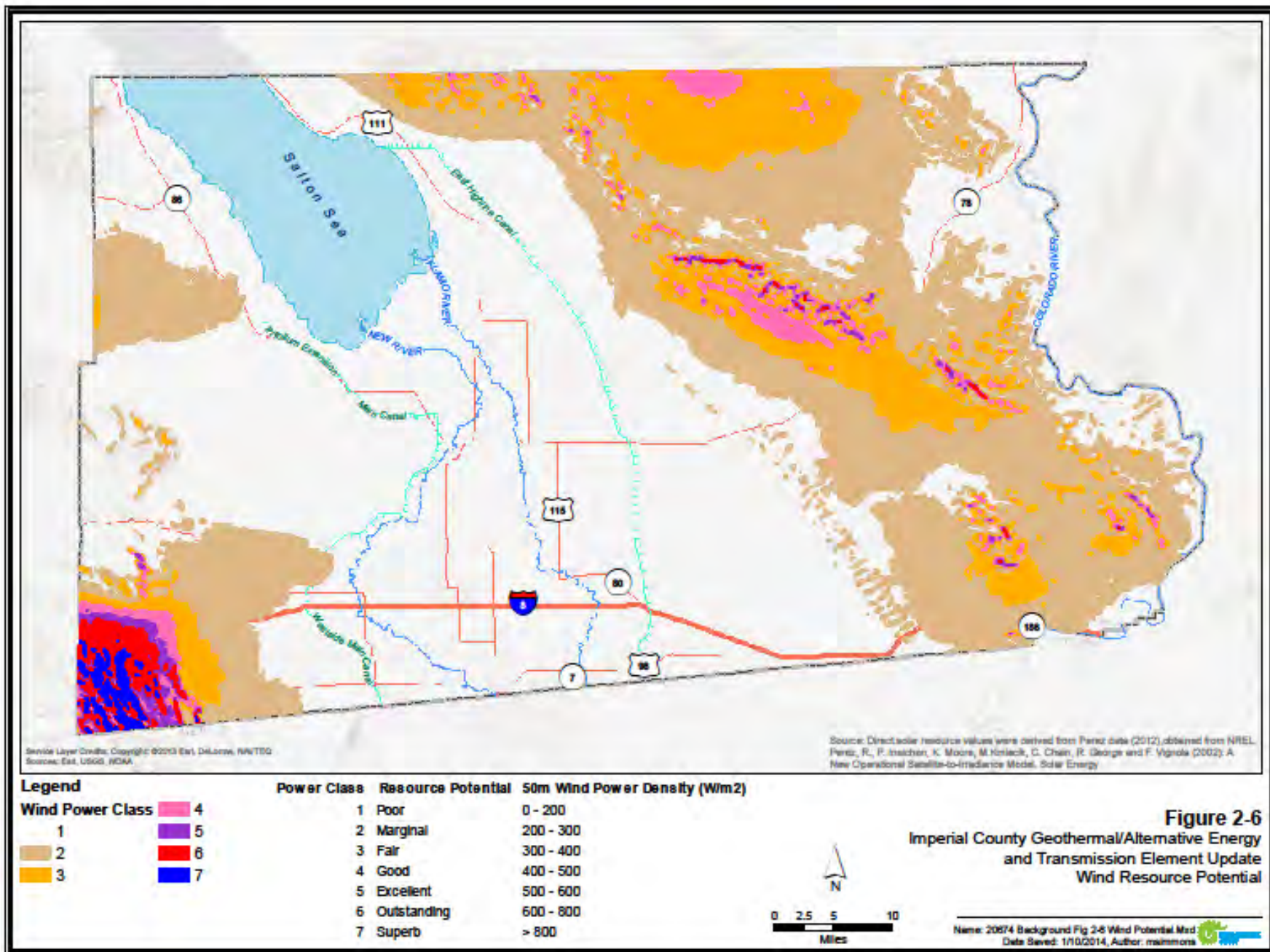
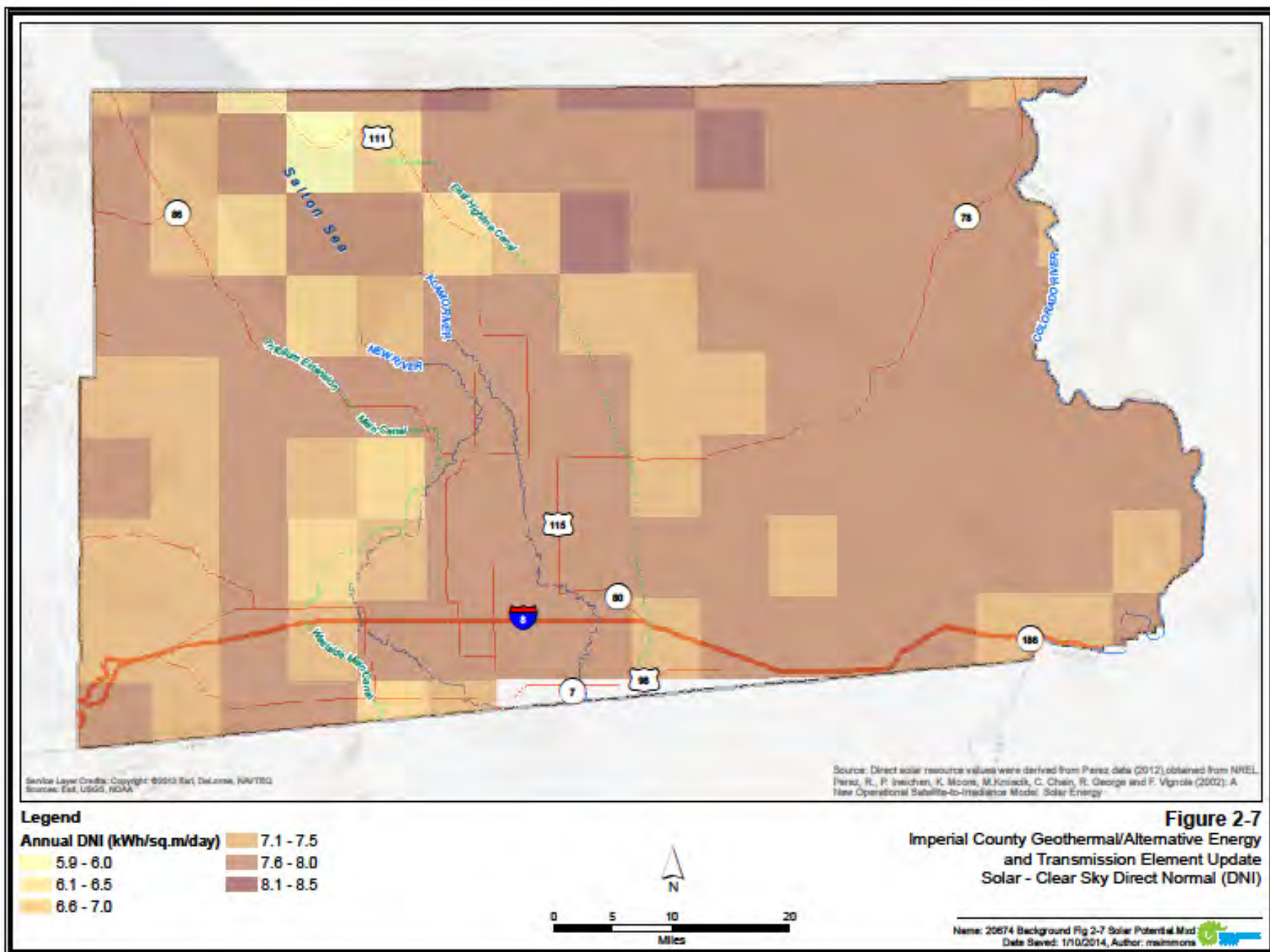


Figure 2-4
Imperial County Geothermal/Alternative Energy
and Transmission Element Update
Known Geothermal Resource Areas

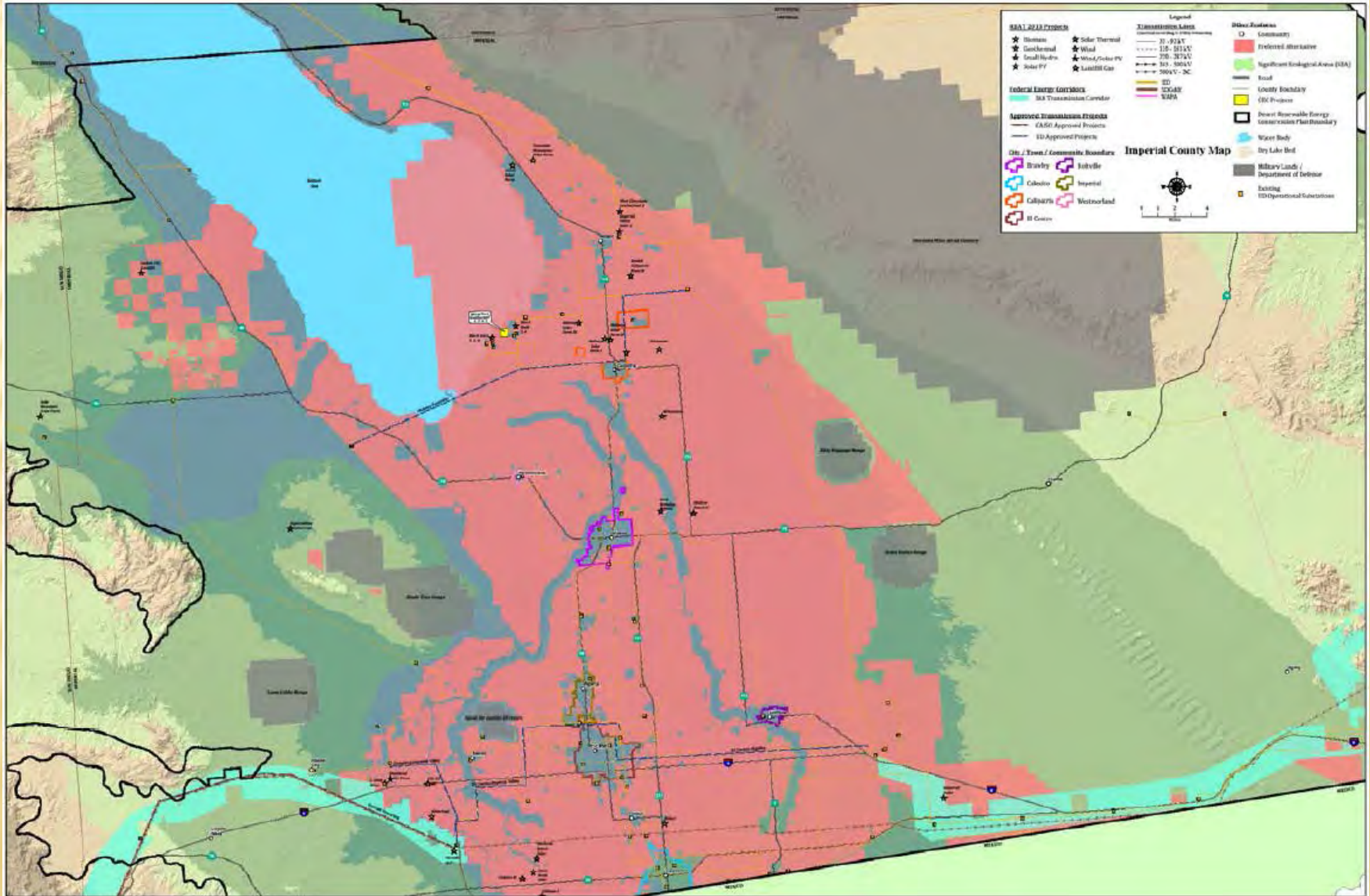




DRECP PLANNING AREA



IMPERIAL COUNTY DRECP ALTERNATIVE





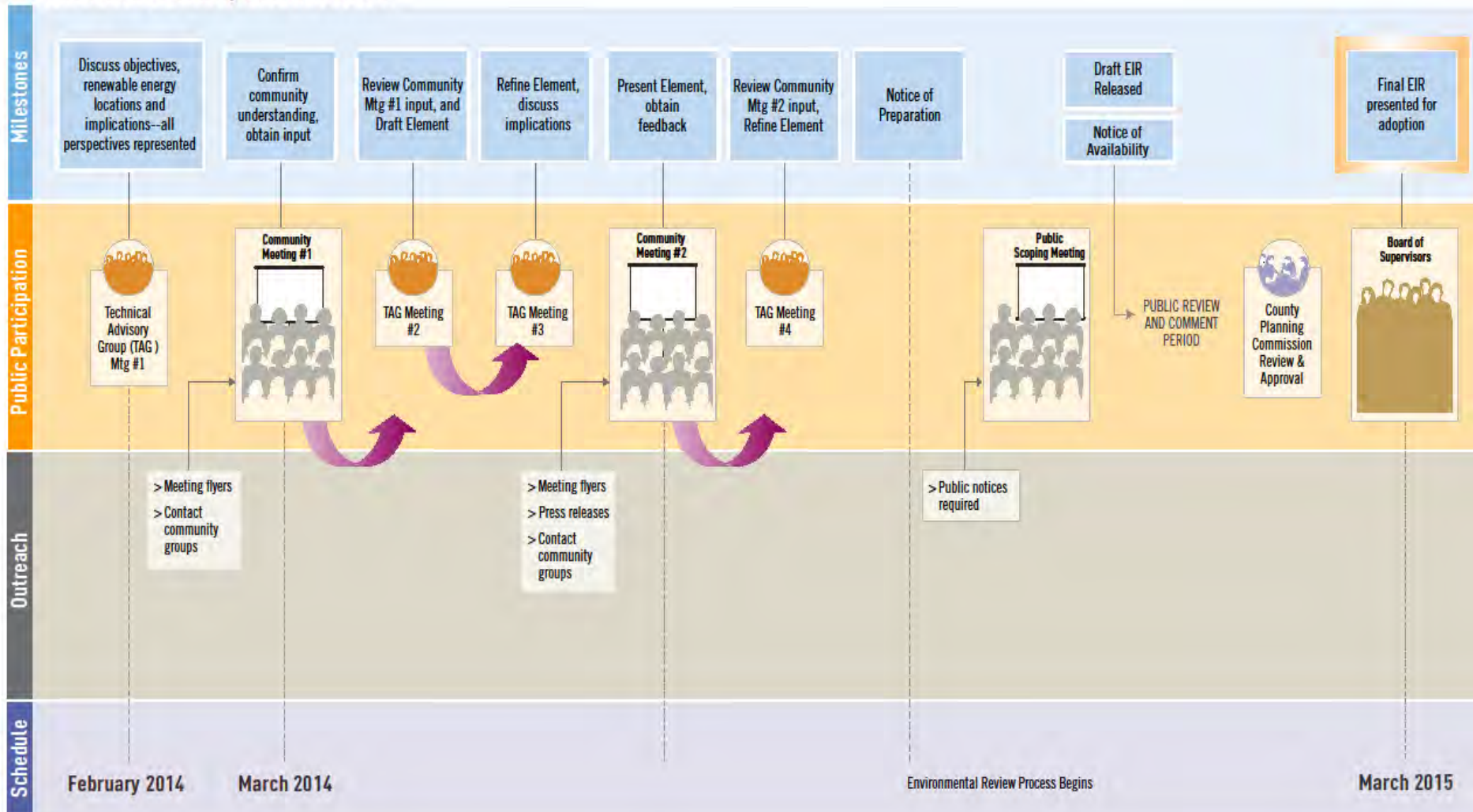
County of Imperial Update of Geothermal/Renewable Energy and Transmission Element and Potential General Plan Review/Update and EIR



*Preserving Agriculture & the Natural Habitat
Providing Renewable Energy & Economic Development Opportunities*

DRAFT

The Public Participation Process:



NEXT STEPS

- **Public Outreach Program**
- **Finalize Baseline Environmental Study**
- **Confirm Renewable Energy Generation Strategies**
- **Prepare Draft Geothermal/Alternative Energy and Transmission Element with Implementing Ordinances**
- **Complete CEQA Environmental Document**