

Service Layer Credits: Copyright: ©2013 Esri, DeLorme, NAVTEQ  
Sources: Esri, USGS, NOAA

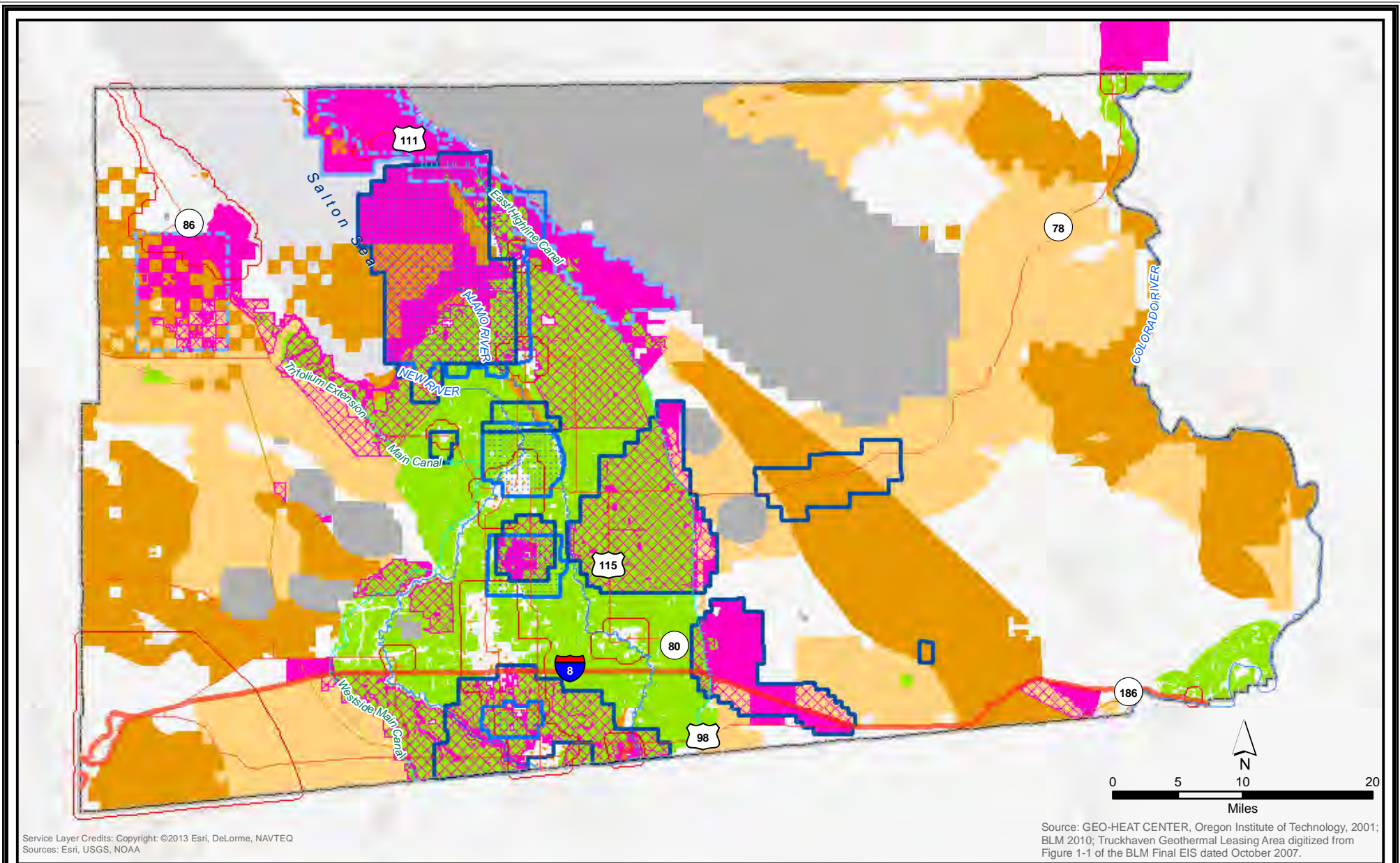
Source: GEO-HEAT CENTER, Oregon Institute of Technology, 2001;  
BLM 2010; Truckhaven Geothermal Leasing Area digitized from  
Figure 1-1 of the BLM Final EIS dated October 2007.

**Legend**

- |                                 |  |  |  |
|---------------------------------|--|--|--|
| KGRA                            | Urban Areas (plus 1/2-mile buffer)           | County of Imperial Renewable Energy Focus Areas, Alternative 1 (to show full extent of DFAs) | <p><b>Figure 20-6</b><br/>Imperial County Geothermal/Alternative Energy and Transmission Element Update<br/>Alternative 1<br/>For Use in Alternative Energy Suitability Analysis</p> |
| Geothermal Overlay Zones (2006) | Prime and Statewide Significant Farmland     | County of Imperial Renewable Energy Focus Areas, Alternative 1                               |  |
| BLM/NEPA-Designated Zones       | Park Lands & Recreational Areas              |  |  |
|                                 | Maintenance of Visual Quality has High Value |  |  |
|                                 | Military Land Ownership                      |  |  |

Areas that are depicted as solid pink are areas of opportunity within the DRECP with the least constraints. Hatched pink indicate areas of opportunity under the DRECP, but may be constrained within the County.

Name: 20674 Background Fig 20-6 Alternative 1.Mxd  
Date Saved: 6/9/2014, Author: msimmons



Service Layer Credits: Copyright: ©2013 Esri, DeLorme, NAVTEQ  
Sources: Esri, USGS, NOAA

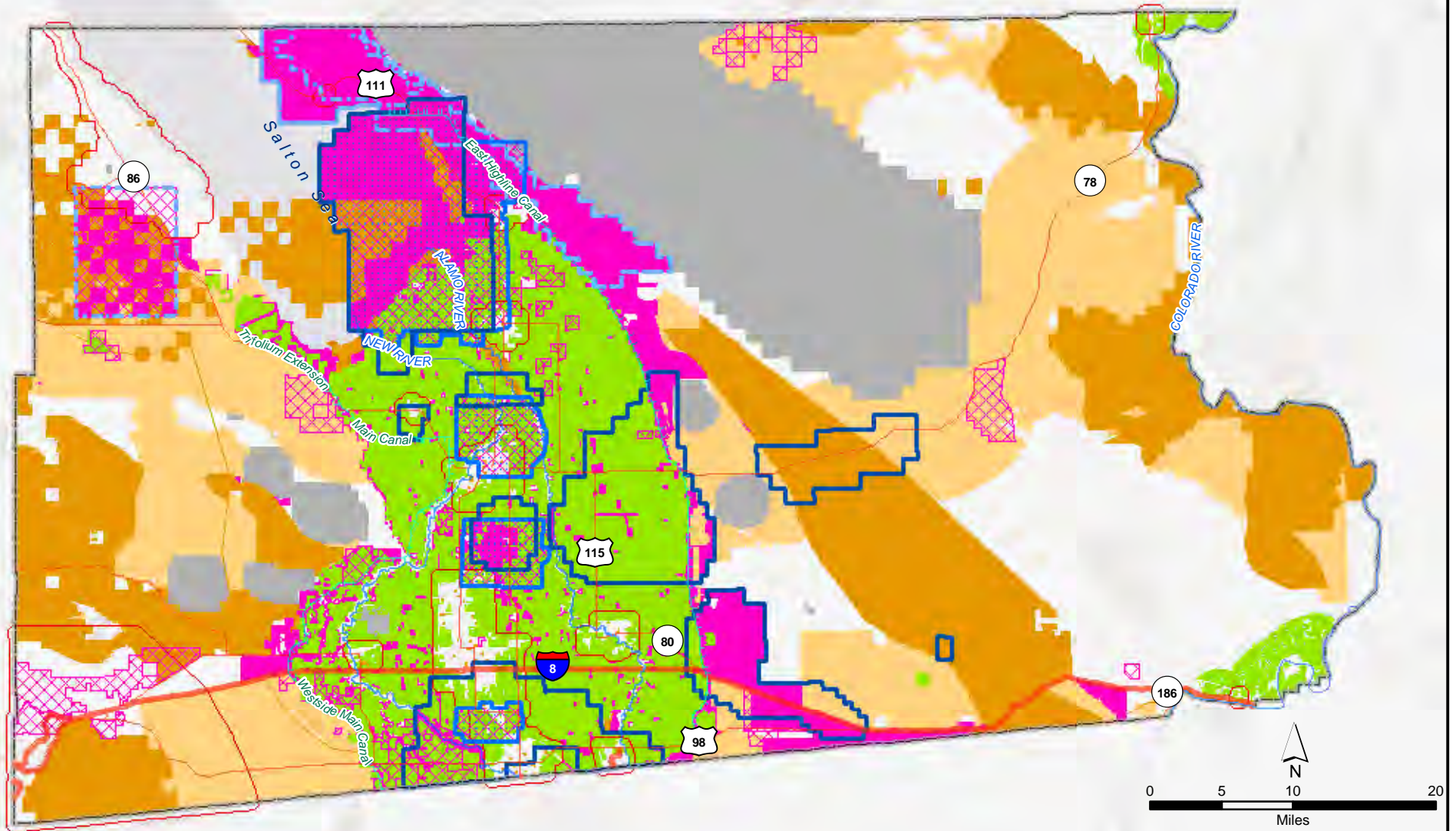
Source: GEO-HEAT CENTER, Oregon Institute of Technology, 2001;  
BLM 2010; Truckhaven Geothermal Leasing Area digitized from  
Figure 1-1 of the BLM Final EIS dated October 2007.

**Legend**

- KGRA
- Geothermal Overlay Zones (2006)
- BLM/NEPA-Designated Zones
- Urban Areas (plus 1/2-mile buffer)
- Prime and Statewide Significant Farmland
- Park Lands & Recreational Areas
- Maintenance of Visual Quality has High Value
- Military Land Ownership
- County of Imperial Renewable Energy Focus Areas, Alternative 2 (to show full extent of DFAs)
- County of Imperial Renewable Energy Focus Areas, Alternative 2

Areas that are depicted as solid pink are areas of opportunity within the DRECP with the least constraints. Hatched pink indicate areas of opportunity under the DRECP, but may be constrained within the County.

**Figure 20-7**  
**Imperial County Geothermal/Alternative Energy and Transmission Element Update**  
**Alternative 2**  
**For Use in Alternative Energy Suitability Analysis**



Service Layer Credits: Copyright: ©2013 Esri, DeLorme, NAVTEQ  
Sources: Esri, USGS, NOAA

Source: GEO-HEAT CENTER, Oregon Institute of Technology, 2001; BLM 2010; Truckhaven Geothermal Leasing Area digitized from Figure 1-1 of the BLM Final EIS dated October 2007.

**Legend**

- KGRA
- Geothermal Overlay Zones (2006)
- BLM/NEPA-Designated Zones
- Urban Areas (plus 1/2-mile buffer)
- Prime and Statewide Significant Farmland
- Park Lands & Recreational Areas
- Maintenance of Visual Quality has High Value
- Military Land Ownership
- County of Imperial Renewable Energy Focus Areas, Alternative 2 (to show full extent of DFAs)
- County of Imperial Renewable Energy Focus Areas, Alternative 3

Areas that are depicted as solid pink are areas of opportunity within the DRECP with the least constraints.

**Figure 20-8**  
Imperial County Geothermal/Alternative Energy  
and Transmission Element Update  
Alternative 3  
For Use in Alternative Energy Suitability Analysis