

Big Rock Cluster Solar Farms

AESTHETICS STUDY

REVISION INDEX

Page/Reason	REV	Date	PROD	CHECK	APRV
Draft for Client review	0	2-June-2017	JDL	SAS	JDL
Updated per Owner's comments – Additional parcels added	1	27-Sept-2017	JDL	SAS	JDL

Contents

1	Introduction	3
2	Laurel	6
	Laurel 1.....	6
	Laurel 2.....	9
	Laurel 3.....	12
3	Big Rock 1	16
	Big Rock 1	16

1 Introduction

The purpose of this report is to show the potential visual impact on the landscape due to the construction of two utility scale solar photovoltaic plants in Imperial County, California. The cluster parcels are namely grouped in four different projects, Laurel 1 (yellow), Laurel 2 (red), Laurel 3 (little purple and green) and Big Rock 1 (in dark purple and blue color in Figure 1).

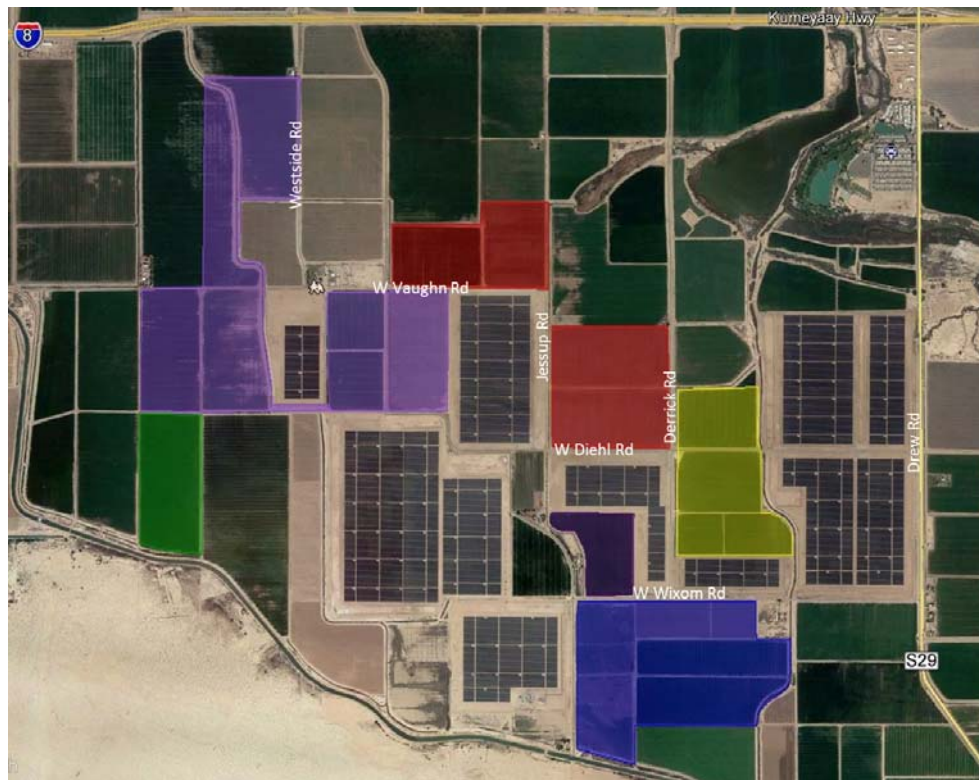


Fig 1. - Location of PV Project and public roads

The visual impact has been evaluated by creating 3D render images. The simulated scenarios recreate the future landscape after the plants will be built.

For the simulations, dual axis tracker blocks have been considered. Each skid inverter clock would have 16 trackers connected. Each tracker would be composed of 10 rows of 8 polycrystalline modules with a total dimension of approximately 53' x 33', as shown in Figure 2, Approximate Tracker Dimensions.

Big Rock Cluster Solar Farms – Aesthetics Study

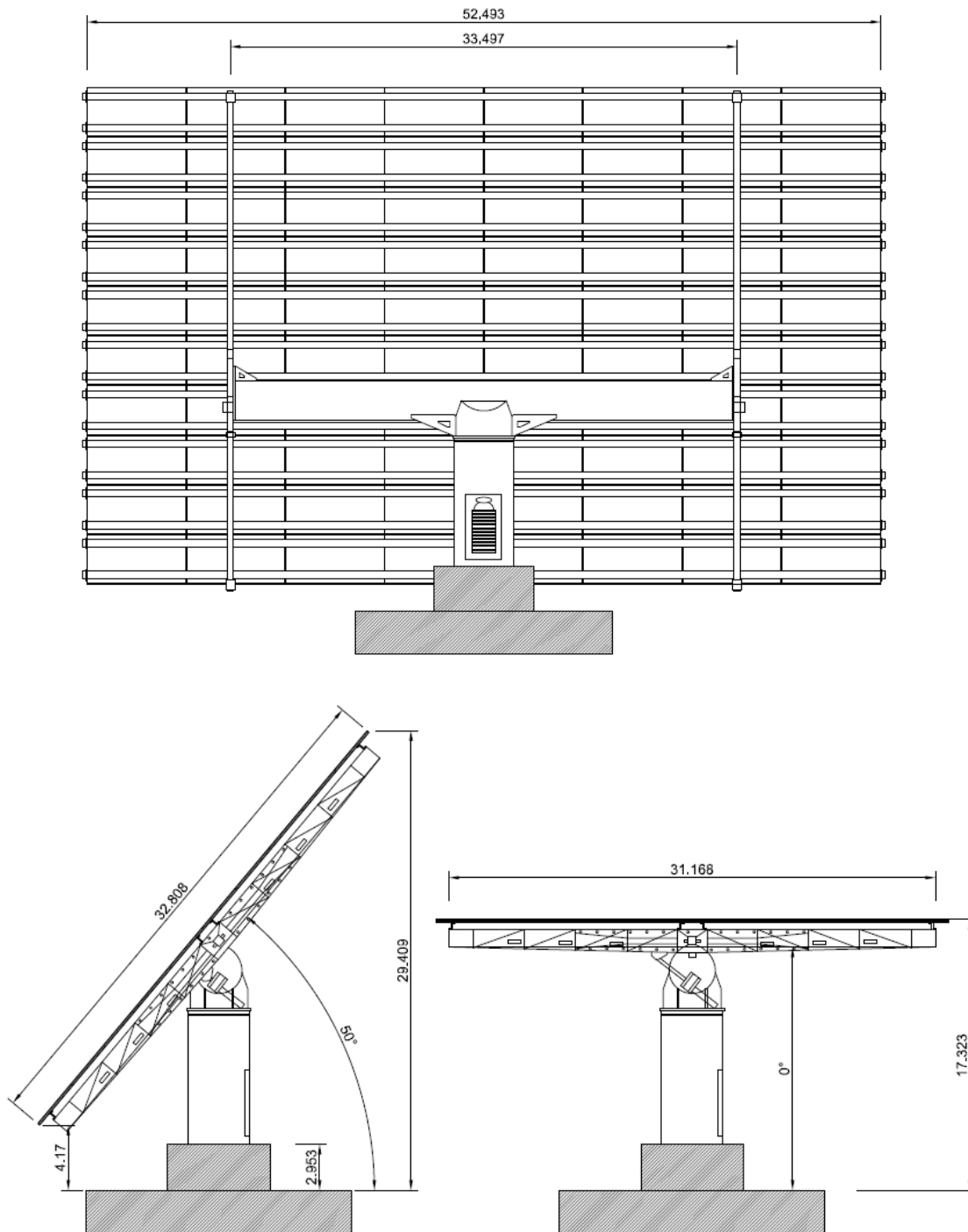


Fig 2 – Approximate Tracker Dimensions

The distance between trackers has been optimized in order to minimize the shading with an optimum usage of the land. According to several tracker manufacturers, a 65' x 65' grid has been considered as the N-S distance and E-W layout grid for the trackers.

Big Rock Cluster Solar Farms – Aesthetics Study

Operations and maintenance facilities, together with substation and transmission facilities have been included in order to show the visual impact of those permanent buildings for the project's life. Final design and location/route may be revised prior to issuance of permits.

The following image show an aerial view of the completed project.



Fig 3 – Post-Construction Image looking North

2 Laurel

Laurel 1



Fig 4 – Aerial view of Laurel 1

Big Rock Cluster Solar Farms – Aesthetics Study



Fig 5 – Corner of Derrick and Diehl facing Northeast, before construction



Fig 6 – Corner of Derrick and Diehl facing Northeast, after construction

Big Rock Cluster Solar Farms – Aesthetics Study



Fig 7 – From the corner of Derrick and Diehl facing Southeast, before construction



Fig 8 – From the corner of Derrick and Diehl facing Southeast, after construction

Laurel 2



Fig 9 – Aerial view of Laurel 2

Big Rock Cluster Solar Farms – Aesthetics Study



Fig 10 - From the corner of Derrick and Diehl facing Northwest, before construction



Fig 11 - From the corner of Derrick and Diehl facing Northwest, after construction

Big Rock Cluster Solar Farms – Aesthetics Study



Fig 12 - From the Northeast corner looking Southwest from Jessup Road, before construction



Fig 13 - From the Northeast corner looking Southwest from Jessup Road, after construction

Laurel 3



Fig 14 – Aerial View of Laurel 3



Fig 15 – Aerial View of Laurel 3

Big Rock Cluster Solar Farms – Aesthetics Study



Fig 16 –Northwest corner at Westside Road and Vaughn looking South, before construction



Fig 17 –Northwest corner at Westside Road and Vaughn looking South, after construction

Big Rock Cluster Solar Farms – Aesthetics Study



Fig 18 – Center on Vaughn Road looking Northeast, before construction



Fig 19 – Center on Vaughn Road looking Northeast, after construction

Big Rock Cluster Solar Farms – Aesthetics Study



Fig 20 – Northwest corner looking Southeast from field road, before construction



Fig 21 – Northwest corner looking Southeast from field road, after construction

3 Big Rock 1

Big Rock 1



Fig 22 – Aerial view of Big Rock 1

Big Rock Cluster Solar Farms – Aesthetics Study



Fig 23 – Facing Southeast @ corner of Liebert & Wixom Roads, before construction



Fig 24 – Facing Southeast @ corner of Liebert & Wixom Roads, after construction

Big Rock Cluster Solar Farms – Aesthetics Study



Fig 25 – Vogel Road facing West, before construction



Fig 26 – Vogel Road facing West, after construction

Big Rock Cluster Solar Farms – Aesthetics Study



Fig 27 – Southwest corner of the site on Wixom Road looking Northeast, before construction



Fig 28 – Southwest corner of the site on Wixom Road looking Northeast, after construction