



9/15/2010
Source: Google Earth

miles 2
km 3





6/05/2009
Source: Google Earth

miles 2
km 3





2/28/2008
Source: Google Earth

miles 2
km 3





12/30/2005
Source: Google Earth

miles 2
km 3





11/23/2005
Source: Google Earth

miles 2
km 3

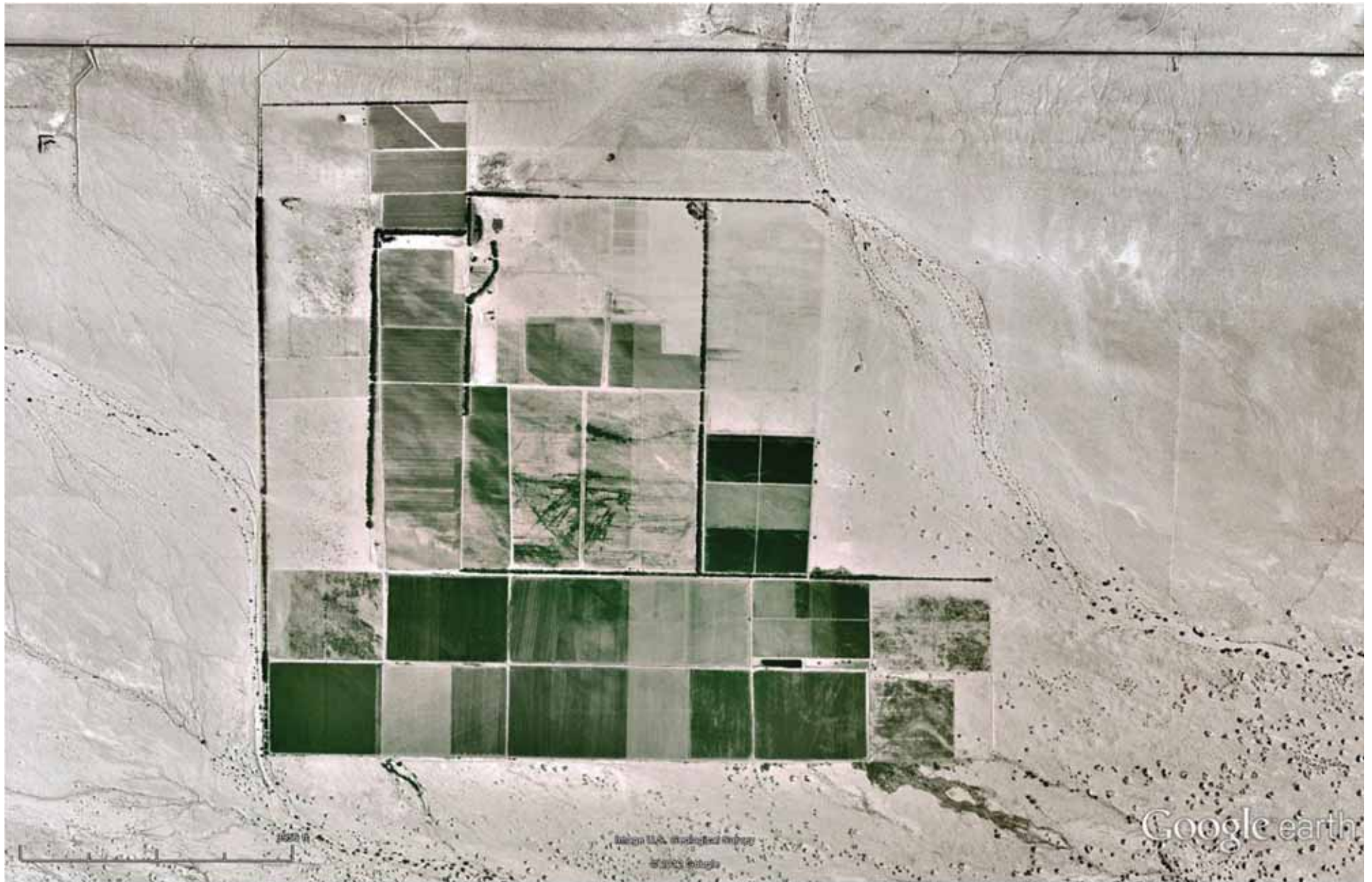




9/04/2004
Source: Google Earth

miles 2
km 3





6/02/2002
Source: Google Earth

miles 2
km 3





6/15/1996
Source: Google Earth

miles
km



THIS PAGE INTENTIONALLY LEFT BLANK.

Appendix I

EDR Topo Map Report

THIS PAGE INTENTIONALLY LEFT BLANK.

Seville Solar Project (Revised for Seville Solar Farm One)

SEC 23 & Part of SEC 26 & 27, T12S, R9E, SBB&M

Unincorporated Imper, CA 92274

Inquiry Number: 3366110.4

July 13, 2012

EDR Historical Topographic Map Report

THIS PAGE INTENTIONALLY LEFT BLANK.

EDR Historical Topographic Map Report

Environmental Data Resources, Inc.s (EDR) Historical Topographic Map Report is designed to assist professionals in evaluating potential liability on a target property resulting from past activities. EDRs Historical Topographic Map Report includes a search of a collection of public and private color historical topographic maps, dating back to the early 1900s.

Thank you for your business.
Please contact EDR at 1-800-352-0050
with any questions or comments.

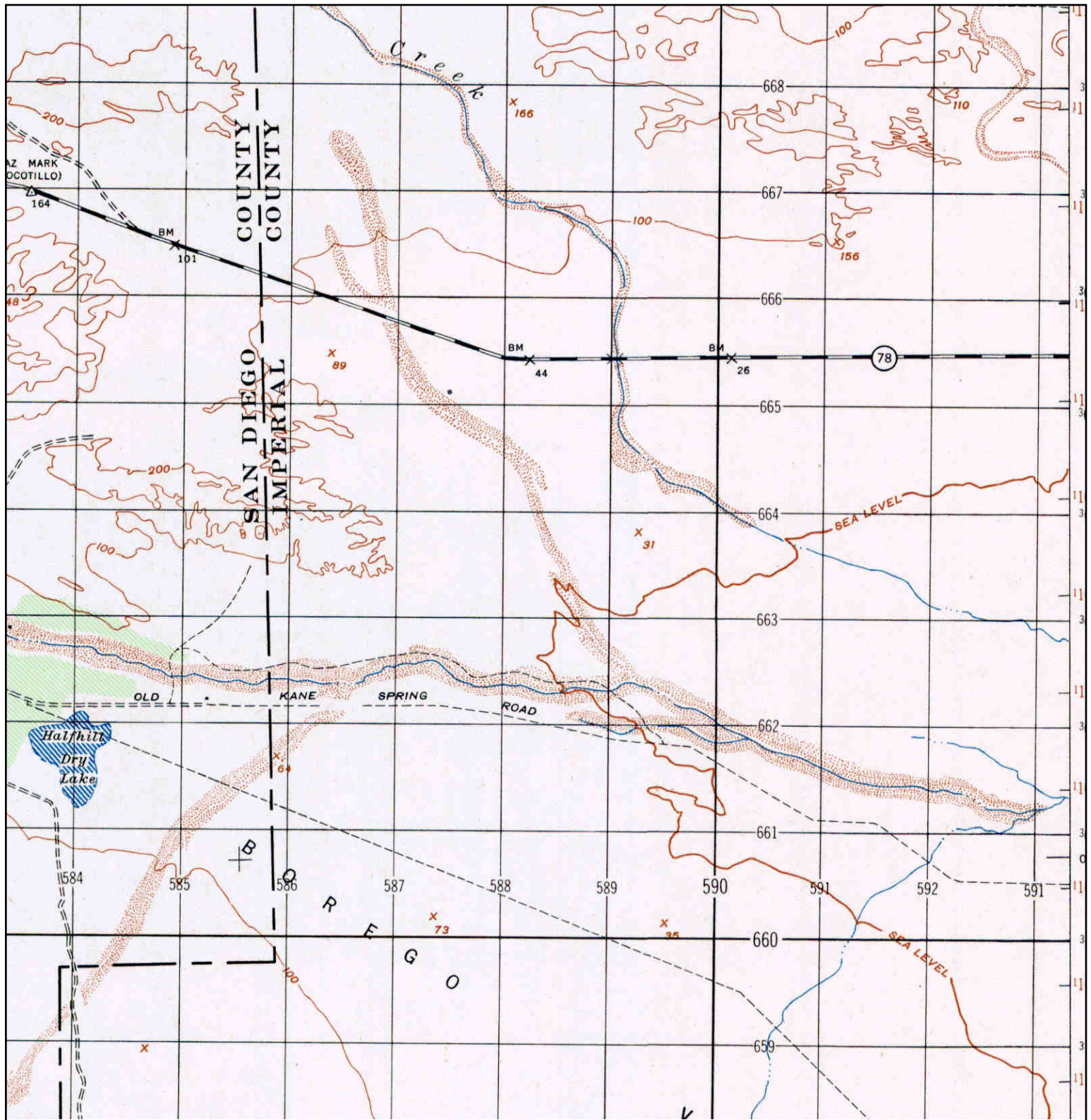
Disclaimer - Copyright and Trademark Notice

This Report contains certain information obtained from a variety of public and other sources reasonably available to Environmental Data Resources, Inc. It cannot be concluded from this Report that coverage information for the target and surrounding properties does not exist from other sources. **NO WARRANTY EXPRESSED OR IMPLIED, IS MADE WHATSOEVER IN CONNECTION WITH THIS REPORT. ENVIRONMENTAL DATA RESOURCES, INC. SPECIFICALLY DISCLAIMS THE MAKING OF ANY SUCH WARRANTIES, INCLUDING WITHOUT LIMITATION, MERCHANTABILITY OR FITNESS FOR A PARTICULAR USE OR PURPOSE. ALL RISK IS ASSUMED BY THE USER. IN NO EVENT SHALL ENVIRONMENTAL DATA RESOURCES, INC. BE LIABLE TO ANYONE, WHETHER ARISING OUT OF ERRORS OR OMISSIONS, NEGLIGENCE, ACCIDENT OR ANY OTHER CAUSE, FOR ANY LOSS OF DAMAGE, INCLUDING, WITHOUT LIMITATION, SPECIAL, INCIDENTAL, CONSEQUENTIAL, OR EXEMPLARY DAMAGES. ANY LIABILITY ON THE PART OF ENVIRONMENTAL DATA RESOURCES, INC. IS STRICTLY LIMITED TO A REFUND OF THE AMOUNT PAID FOR THIS REPORT.** Purchaser accepts this Report AS IS. Any analyses, estimates, ratings, environmental risk levels or risk codes provided in this Report are provided for illustrative purposes only, and are not intended to provide, nor should they be interpreted as providing any facts regarding, or prediction or forecast of, any environmental risk for any property. Only a Phase I Environmental Site Assessment performed by an environmental professional can provide information regarding the environmental risk for any property. Additionally, the information provided in this Report is not to be construed as legal advice.

Copyright 2012 by Environmental Data Resources, Inc. All rights reserved. Reproduction in any media or format, in whole or in part, of any report or map of Environmental Data Resources, Inc., or its affiliates, is prohibited without prior written permission.

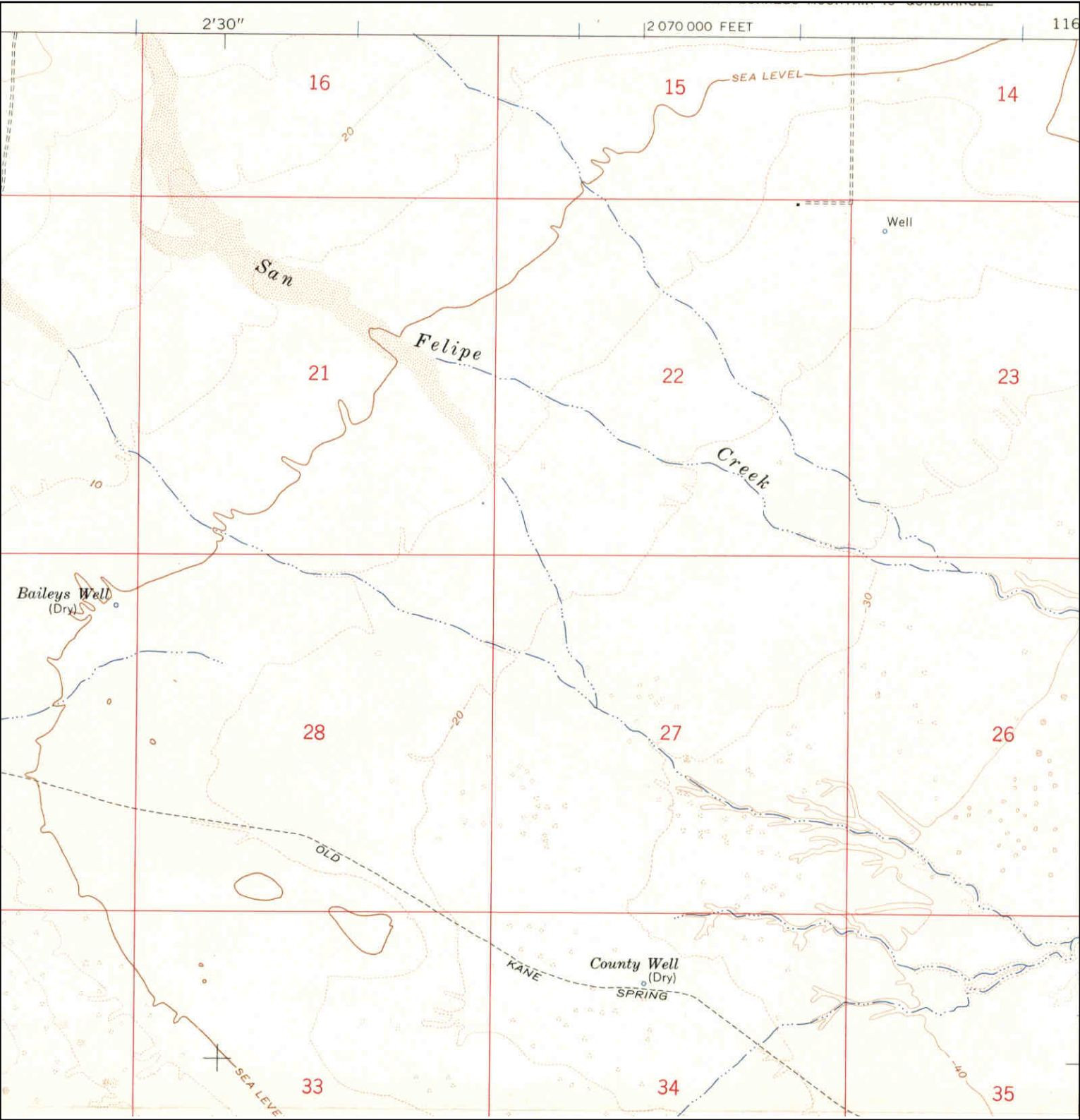
EDR and its logos (including Sanborn and Sanborn Map) are trademarks of Environmental Data Resources, Inc. or its affiliates. All other trademarks used herein are the property of their respective owners.


Historical Topographic Map



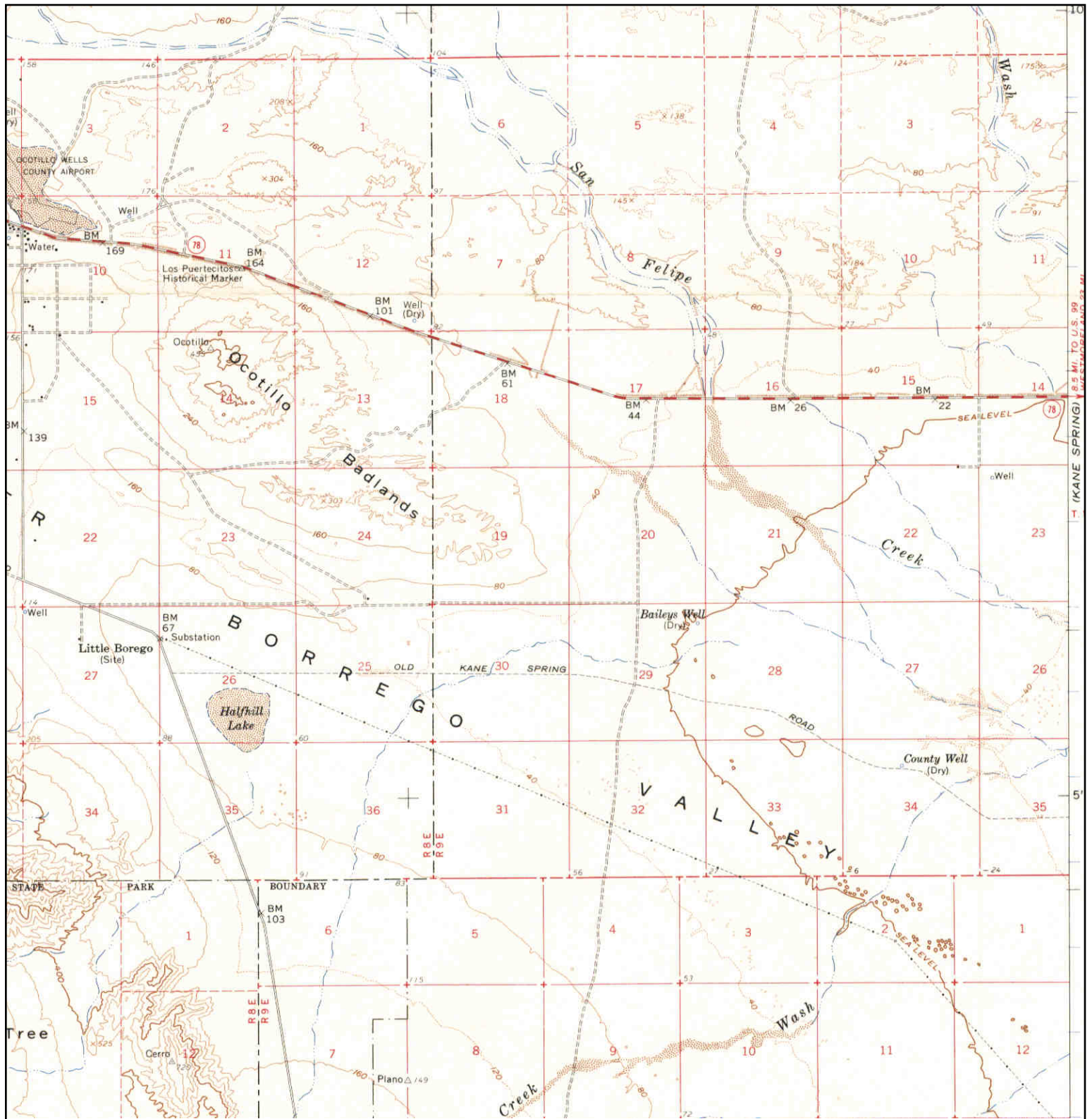
<p>N ↑</p>	<p>TARGET QUAD NAME: BARREL SPRING MAP YEAR: 1947 SERIES: 15 SCALE: 1:50000</p>	<p>SITE NAME: Seville Solar Project ADDRESS: SEC 23 & Part of SEC 26 & 27, T12S, R9E, SBB&M Unincorporated Imper, CA LAT/LONG: 33.1082 / -116.0081</p>	<p>CLIENT: Env. Mgmt. Assoc. Inc. CONTACT: Terry R. Thomas INQUIRY#: 3366110.4 RESEARCH DATE: 07/13/2012</p>
----------------	------------------------------------------------------------------------------------------------------------------	-------------------------------------------------------------------------------------------------------------------------------------------------------------------------------------------------------------	---------------------------------------------------------------------------------------------------------------------------------------------------------

Historical Topographic Map



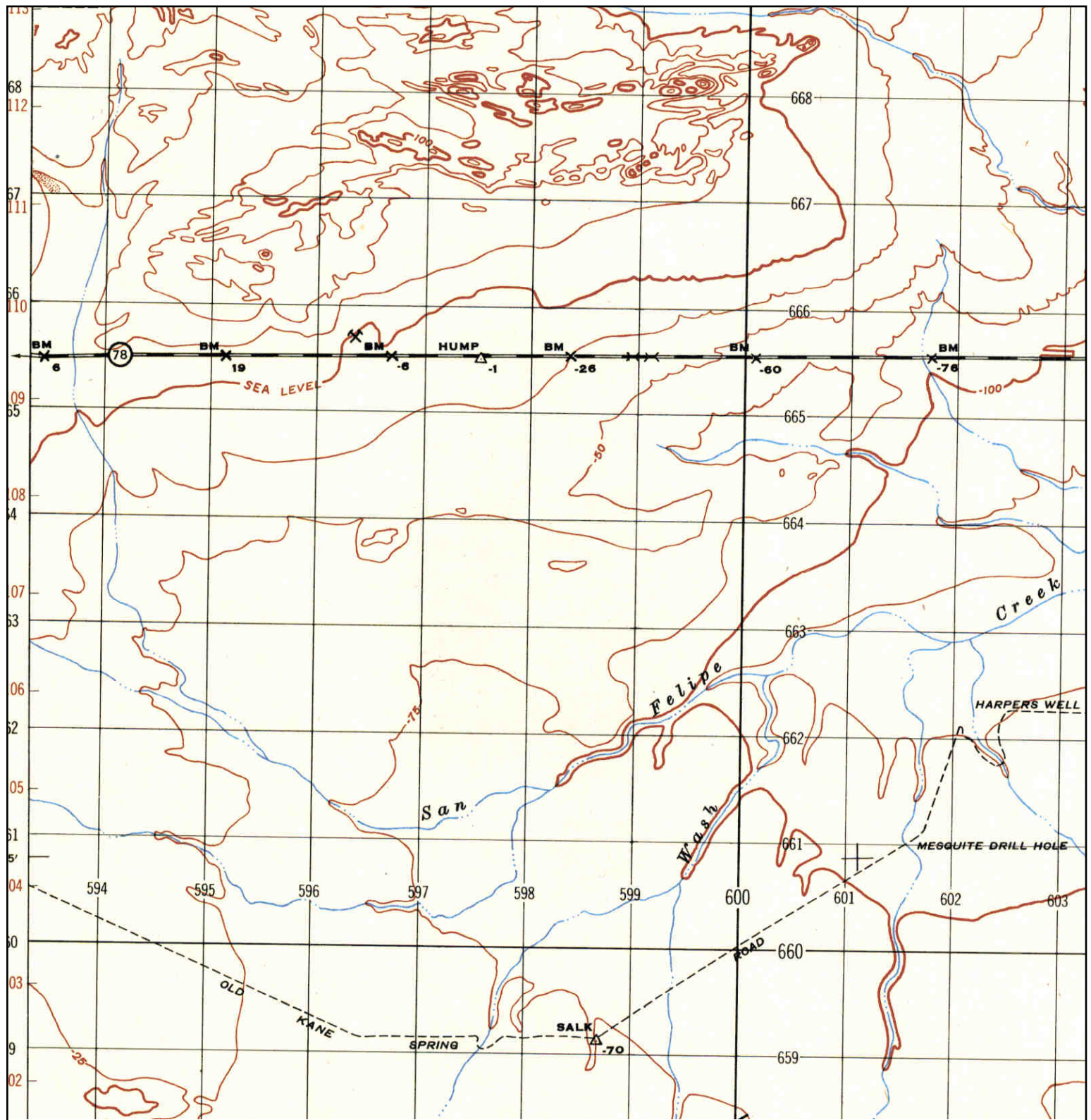
	TARGET QUAD	SITE NAME: Seville Solar Project	CLIENT: Env. Mgmt. Assoc. Inc.
	NAME: BORRERO MOUNTAIN SE	ADDRESS: SEC 23 & Part of SEC 26 & 27, T12S, R9E, SBB&M	CONTACT: Terry R. Thomas
	MAP YEAR: 1958	LAT/LONG: 33.1082 / -116.0081	INQUIRY#: 3366110.4
	SERIES: 7.5		RESEARCH DATE: 07/13/2012
	SCALE: 1:24000		

Historical Topographic Map



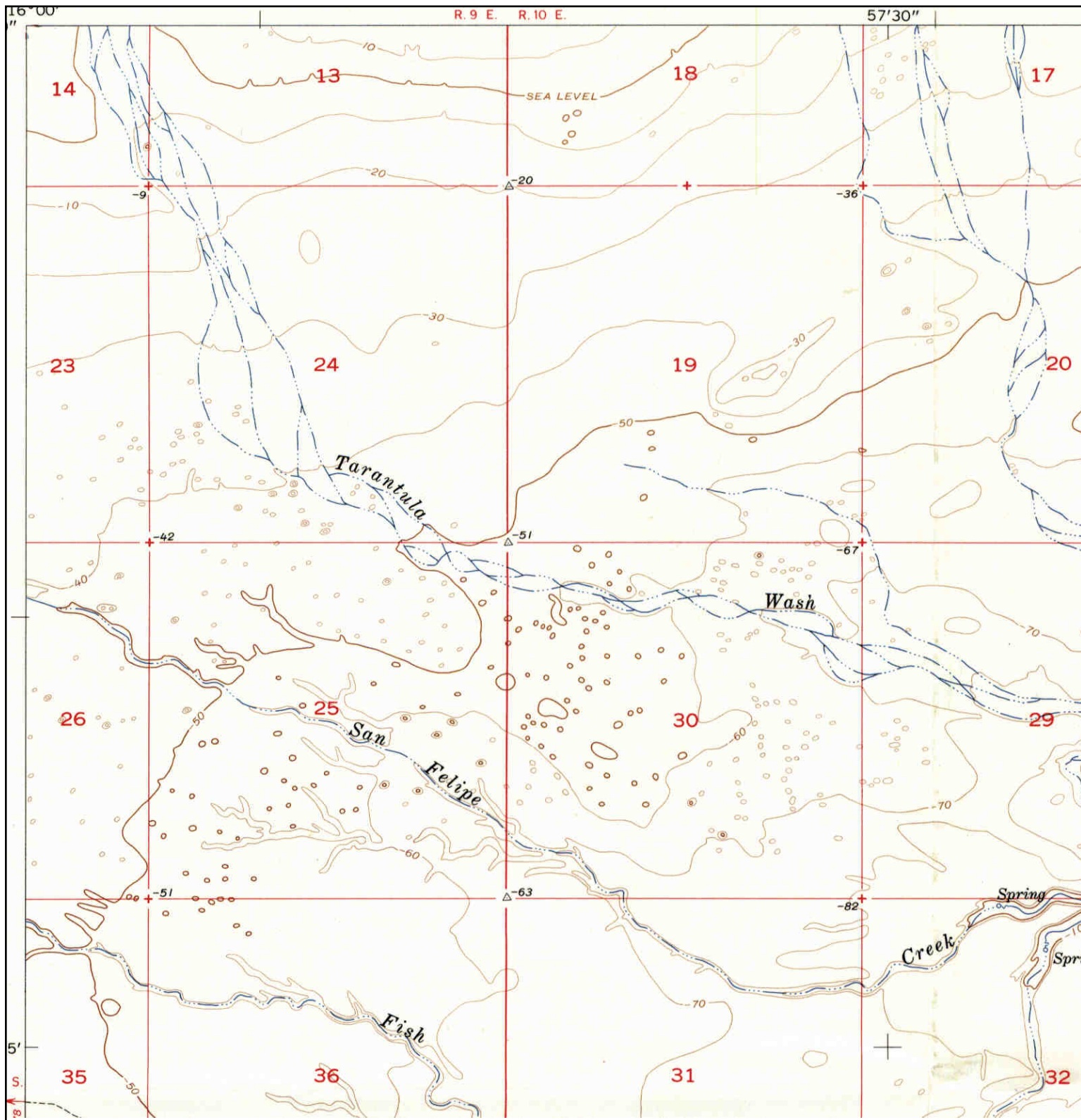
<div>N</div> <div>↑</div>	<div>TARGET QUAD</div> <div>NAME: BORREGO MOUNTAIN</div> <div>MAP YEAR: 1960</div> <div>SERIES: 15</div> <div>SCALE: 1:62500</div>	<div>SITE NAME: Seville Solar Project</div> <div>ADDRESS: SEC 23 & Part of SEC 26 & 27, T12S, R9E, SBB&M</div> <div>Unincorporated Imper, CA</div> <div>LAT/LONG: 33.1082 / -116.0081</div>	<div>CLIENT: Env. Mgmt. Assoc. Inc.</div> <div>CONTACT: Terry R. Thomas</div> <div>INQUIRY#: 3366110.4</div> <div>RESEARCH DATE: 07/13/2012</div>
---------------------------	------------------------------------------------------------------------------------------------------------------------------------	---------------------------------------------------------------------------------------------------------------------------------------------------------------------------------------------------------	---------------------------------------------------------------------------------------------------------------------------------------------------


Historical Topographic Map



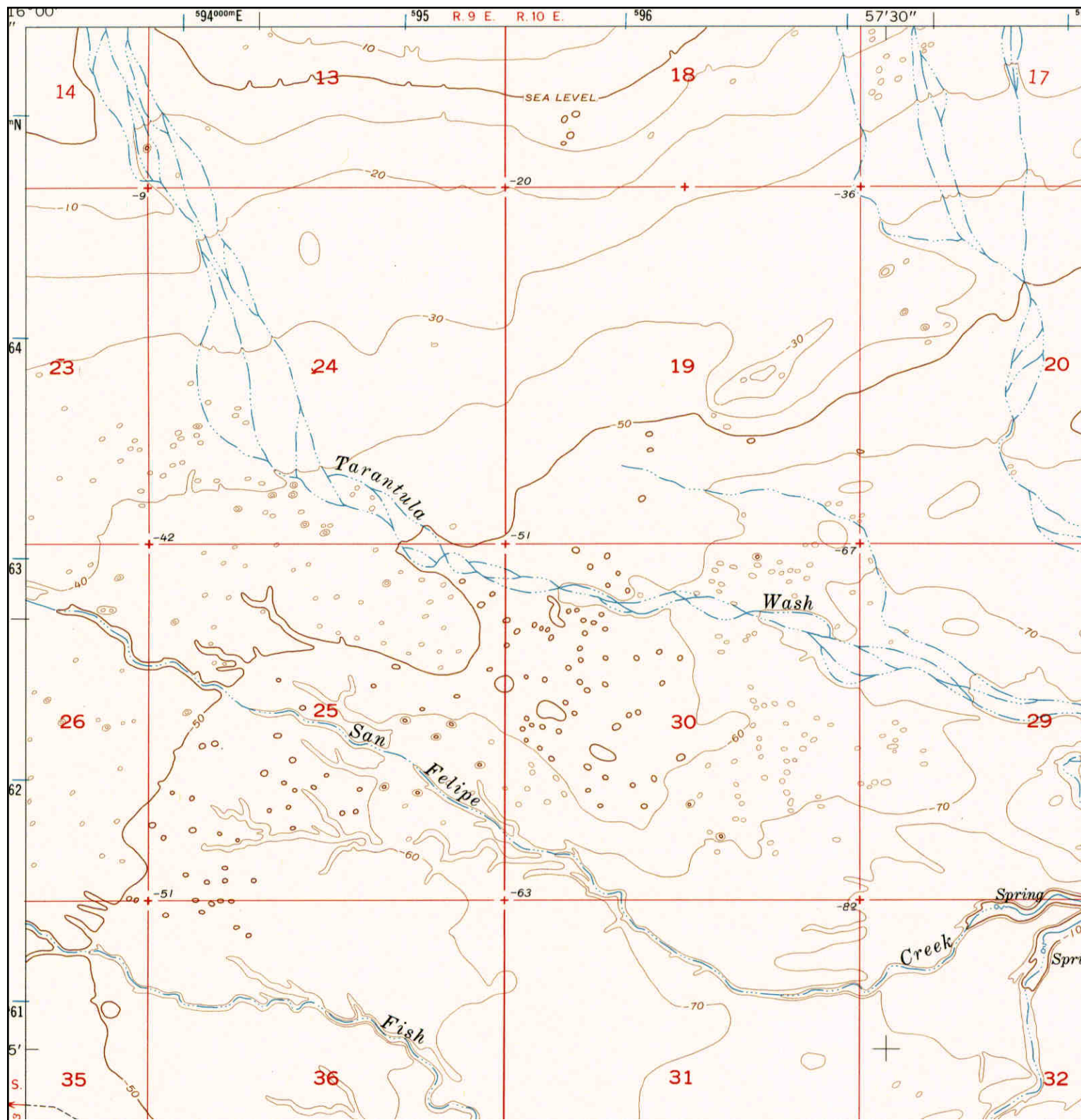
<div>N</div> <div>↑</div>	ADJOINING QUAD		<div>SITE NAME: Seville Solar Project</div> <div>ADDRESS: SEC 23 & Part of SEC 26 & 27, T12S, R9E, SBB&M</div> <div>Unincorporated Imper, CA</div> <div>LAT/LONG: 33.1082 / -116.0081</div>	<div>CLIENT: Env. Mgmt. Assoc. Inc.</div> <div>CONTACT: Terry R. Thomas</div> <div>INQUIRY#: 3366110.4</div> <div>RESEARCH DATE: 07/13/2012</div>
	NAME: KANE SPRING			
	MAP YEAR: 1947			
	SERIES: 15			
	SCALE: 1:50000			

Historical Topographic Map



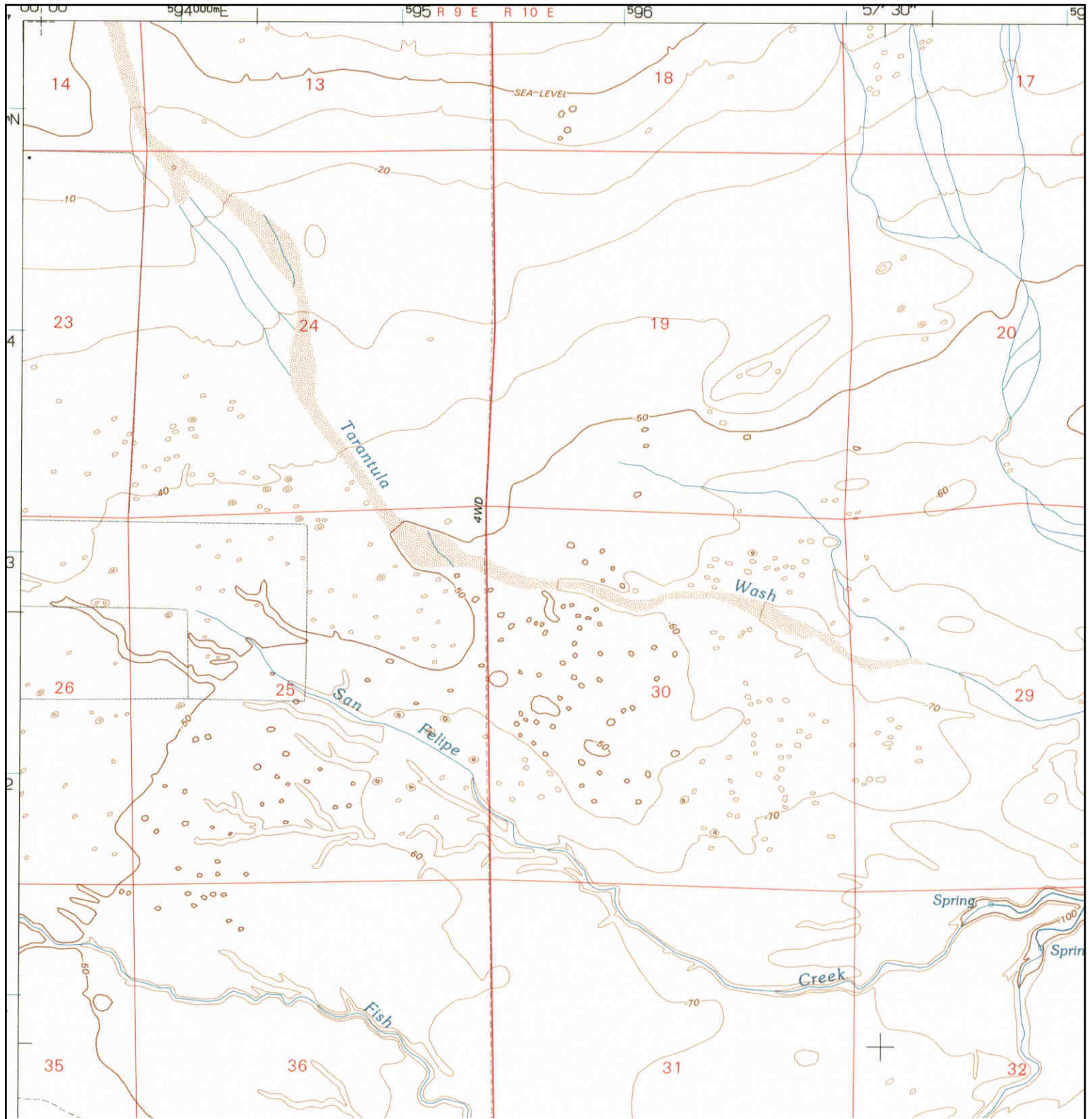
	ADJOINING QUAD		
	NAME: HARPERS WELL MAP YEAR: 1956 SERIES: 7.5 SCALE: 1:24000	SITE NAME: Seville Solar Project ADDRESS: SEC 23 & Part of SEC 26 & 27, T12S, R9E, SBB&M Unincorporated Imper, CA LAT/LONG: 33.1082 / -116.0081	CLIENT: Env. Mgmt. Assoc. Inc. CONTACT: Terry R. Thomas INQUIRY#: 3366110.4 RESEARCH DATE: 07/13/2012


Historical Topographic Map



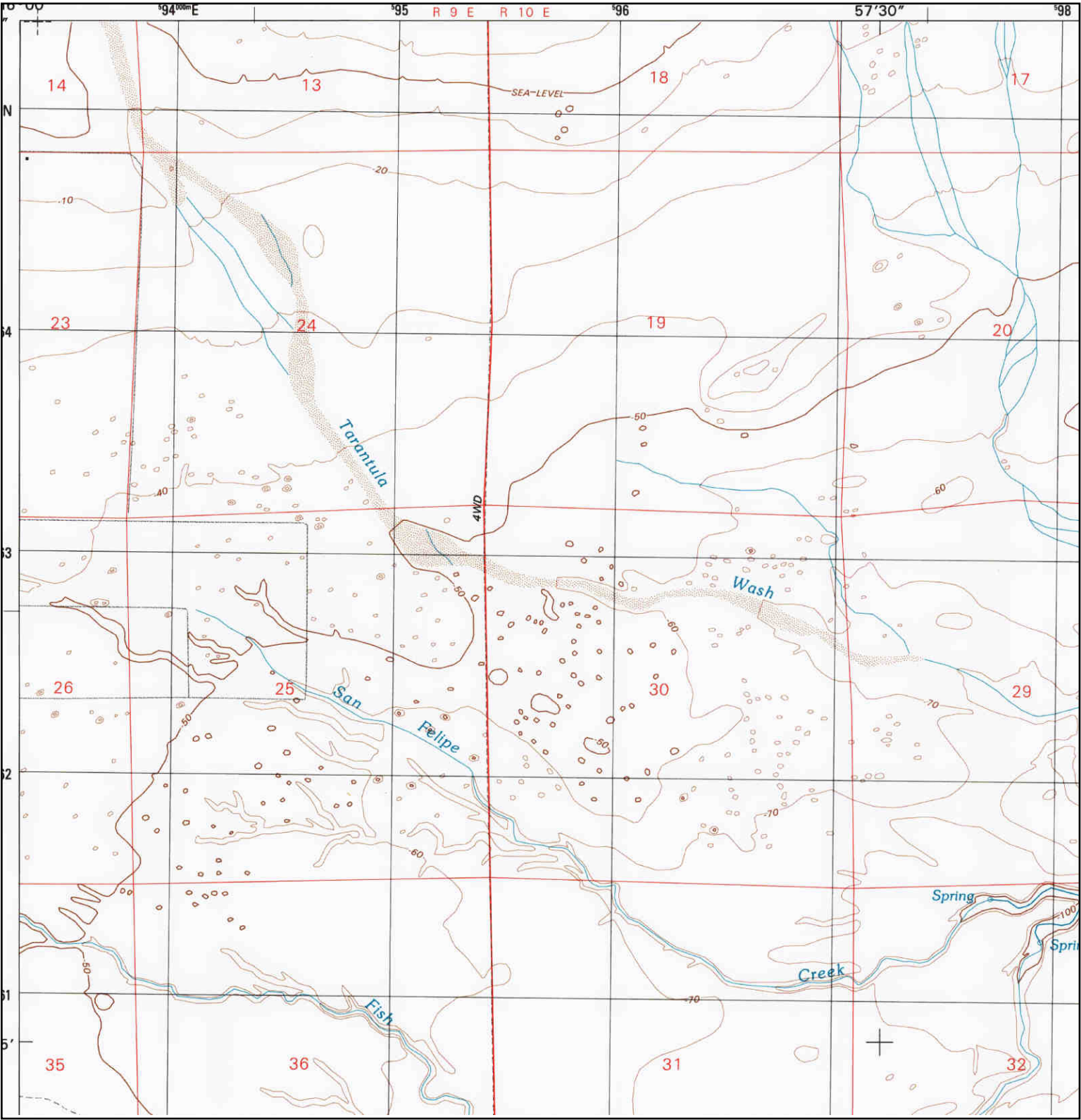
<p>N ↑</p>	<p>ADJOINING QUAD NAME: HARPERS WELL MAP YEAR: 1978 PHOTOINSPECTED FROM : SERIES: 7.5 SCALE: 1:24000</p>	<p>SITE NAME: Seville Solar Project ADDRESS: SEC 23 & Part of SEC 26 & 27, T12S, R9E, SBB&M Unincorporated Imper, CA LAT/LONG: 33.1082 / -116.0081</p>	<p>CLIENT: Env. Mgmt. Assoc. Inc. CONTACT: Terry R. Thomas INQUIRY#: 3366110.4 RESEARCH DATE: 07/13/2012</p>
----------------	------------------------------------------------------------------------------------------------------------------------------------------	-------------------------------------------------------------------------------------------------------------------------------------------------------------------------------------------------------------	---------------------------------------------------------------------------------------------------------------------------------------------------------


Historical Topographic Map



	ADJOINING QUAD		
	NAME:	HARPERS WELL	SITE NAME: Seville Solar Project
	MAP YEAR:	1992	ADDRESS: SEC 23 & Part of SEC 26 & 27, T12S, R9E, SBB&M
	SERIES:	7.5	Unincorporated Imper, CA
	SCALE:	1:24000	LAT/LONG: 33.1082 / -116.0081
			CLIENT: Env. Mgmt. Assoc. Inc. CONTACT: Terry R. Thomas INQUIRY#: 3366110.4 RESEARCH DATE: 07/13/2012

Historical Topographic Map



	ADJOINING QUAD		
	NAME:	HARPERS WELL	SITE NAME: Seville Solar Project
	MAP YEAR:	1998	ADDRESS: SEC 23 & Part of SEC 26 & 27, T12S, R9E, SBB&M
	SERIES:	7.5	Unincorporated Imper, CA
	SCALE:	1:24000	LAT/LONG: 33.1082 / -116.0081
			CLIENT: Env. Mgmt. Assoc. Inc.
			CONTACT: Terry R. Thomas
			INQUIRY#: 3366110.4
			RESEARCH DATE: 07/13/2012

THIS PAGE INTENTIONALLY LEFT BLANK.

Appendix J

USGS Topographic Map

THIS PAGE INTENTIONALLY LEFT BLANK.