



FIGURE 2.0-3
SOLAR FIELD SITE PARCELS MAP

2.0 PROJECT DESCRIPTION

The existing Gen-Tie structures constructed by the Mount Signal Solar Farm Project pass through and adjacent to lands that have been permitted for solar generation facilities. **Figure 2.0-4** shows the configuration of these projects, the proposed Project, and the location of the Gen-Tie. Some of these projects are under construction while others are completed.

B. GENERAL PLAN AND ZONING DESIGNATIONS

The 32 solar field site parcels are designated “Agriculture” on the Imperial County Land Use Plan (Imperial County 2007a) (refer to Figure 4.2-1 in Section 4.2, Agriculture). **Table 2.0-1** provides the Assessor Parcel Numbers (APNs), zoning, and approximate acreages that comprise the solar field site parcels associated with each CUP.

**TABLE 2.0-1
SOLAR FIELD SITE PARCELS BY CUP**

APN	Acreage	Zoning ¹	APN	Acreage	Zoning ¹
CUP 13-0036			CUP 13-0044		
052-210-025	55.53	A-2	052-440-006	79.82	A-3
052-210-026	61.37	A-2	CUP 13-0045		
052-210-029	73.33	A-2-R	052-350-020	76.64	A-2-R
052-210-006	0.38	A-3	CUP 13-0046		
Total	190.61		052-350-001	159.58	A-2-R
CUP 13-0037			052-350-002	23.20	A-3
052-180-028	71.24	A-2-R	052-350-003	12.89	A-3
052-180-039	152.42	A-2-R	052-350-004	6.57	A-3
Total	223.66		Total	202.24	
CUP 13-0038			CUP 13-0047		
052-180-045	162.93	A-2-R	052-360-008	75.53	A-2-R
CUP 13-0039			052-360-009	4.83	A-3
052-180-034 ²	77.48	A-2-R	052-410-006	51.53	A-3
052-180-054	82.72	A-2-R	Total	131.89	
Total	161.20		CUP 13-0048		
CUP 13-0040			052-440-005	160.00	A-2-R
052-180-015	148.53	A-3	CUP 13-0049		
CUP 13-0041			052-440-003	3.05	A-3
052-180-012	153.61	A-2-R	052-440-004	156.85	A-3
CUP 13-0042			Total	159.90	
052-180-011	115.26	A-3	CUP 13-0050		
052-170-014	36.98	A-2-R	052-210-019	123.54	A-3
052-180-002	40.42	A-3	CUP 13-0051		
052-180-001	36.56	A-2-R	052-210-020 ³	241.98	A-3
052-440-009	2.1	A-2-R	CUP 13-0052		
Total	231.32		052-210-020 ³	194.05	A-3
CUP 13-0043			Total 2,793*		
052-350-021	150.11	A-2-R			
052-350-022	2.00	A-2-R			
Total	152.11				

Source: WRS 2013a (with 2014 updates). *Acreages in Table total slightly more than 2,793. However, the total has been rounded down to 2,793.

¹ Imperial County Zoning Areas: A-2 = Agricultural, General; A-2-R = General Agricultural Rural Zone; A-3 = Heavy Agriculture.

² According to Imperial County Planning and Development Services, the acreage of APN 052-180-034 is 82.16 acres; however, 5 acres will be retained by the landowner as an agricultural homestead and are not included in the total parcel or Project site acreage estimates.

³ APN 052-210-020 is currently under Williamson Act Contract. A Notice of Nonrenewal was recorded by the Department of Conservation on December 4, 2006. The Williamson Act parcel's contract term of encumbrance is due to expire on January 1, 2016.

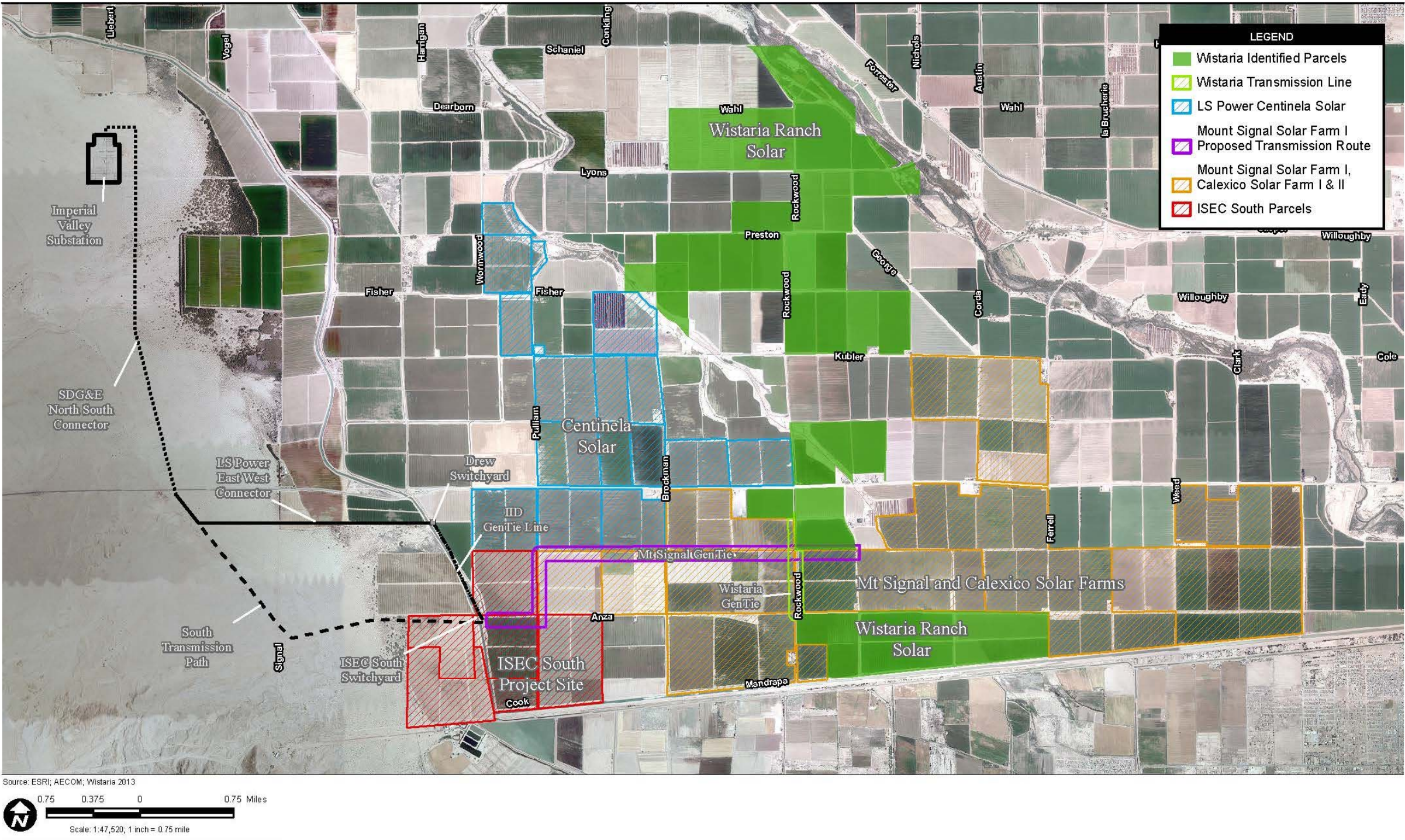


FIGURE 2.0-4
PROJECT CONFIGURATION AND PROPOSED GEN-TIE ALIGNMENT

Table 2.0-2 summarizes the APNs for the Gen-Tie component of the Project. The APNs represent those parcels where the Project's Gen-Tie line will be co-located with the Mount Signal Solar Farm Project's previously approved Gen-Tie line.

**TABLE 2.0-2
PROPOSED GEN-TIE POLES BY APN**

APN	Gen-Tie Pole
052-190-011	22-24
052-190-012	25-31
052-190-022	35,36
052-190-037	32-34
052-210-015	14
052-210-016	15-21

Source: Ferrara 2014e. Note: APNs identified as part of the solar field site parcels are not included in Table 2.0-2.

The northern CUP cluster will be connected to the central CUP cluster via a corridor along the western boundary of APN 052-180-048. The central CUP cluster will be connected with the southern CUP cluster via a corridor within APN 052-210-015.

Per Title 9, Division 5, Sections 90508.02 and 90509.02 of the Land Use Ordinance, solar energy electrical generators, electrical power generating plants, substations, and facilities for the transmission of electrical energy are allowed as conditional uses in Agricultural zones. In keeping with the provisions of the zoning designations, the Applicant is seeking 17 CUPs from the Imperial County Planning and Development Services Department (ICPDSD).

C. CUPs

As previously noted, WRS has filed applications for 17 CUPs (13-0036 thru 13-0052). The Project could be built out at one time or developed as 17 individual CUPs over a ten year period. Each CUP may have its own off-taker (or customer) for electricity. Likewise, each CUP may operate independently from the other CUPs. The CUPs may also be aggregated during construction and operation so that multiple CUPs could be built at one time. This will allow the utilities greater flexibility in obtaining renewable energy to meet ratepayer needs. A brief description of each CUP is provided below. **Figure 2.0-5** shows the overall configuration of the Project while **Figures 2.0-6** thru **2.0-22** depict the layout of each CUP. These figures are provided following the description of CUP 13-0052.

CUP 13-0036

CUP 13-0036 includes four parcels totaling 190.61 acres (refer to **Table 2.0-1**). The CUP area is bounded by the Woodbine Canal and SR-98 on the north; the Greeson Drain and an unnamed dirt farm road on the south; the Woodbine Canal and Mandrapa Road on the east; and agricultural land on the west. Rockwood Road aligns north-south through the center of the CUP geographically separating the CUP into eastern and western parcels. Aside from the roads and canals, the CUP area is surrounded by agricultural land and land that has been permitted for the Centinela Solar Energy Project, Mount Signal and Calxico Solar Farm Projects. CUP 13-0037 is proposed to the north of CUP 13-0036. The Electric Collector Line Corridor is proposed to align north-south along the entire length of Rockwood Road.

Two primary and secondary access points are proposed to CUP 13-0036. One primary and secondary access would be off of SR-98 west of Rockwood Road; the other primary and secondary access points would be off of Rockwood Road. The existing Mount Signal Solar Farm Project/Wistaria shared Gen-Tie borders the southern-most portion of the CUP area and extends west to the ISECS switchyard. The Gen-

2.0 PROJECT DESCRIPTION



FIGURE 2.0-5
OVERALL PROJECT CONFIGURATION

Source: DD&E 2014a.

Tie originates at CUP 13-0036. The Project Gen-Tie would extend west from CUP 13-0036 along the same alignment as the Mount Signal Solar Farm Gen-Tie to connect to the ISECS switchyard. Substation and O&M facilities may be located in the southwest corner of the CUP area (**Figure 2.0-6**).

CUP 13-0037

CUP 13-0037 includes two parcels totaling 223.66 acres (refer to **Table 2.0-1**). The CUP area is bounded by the Wistaria Drain and an unnamed dirt farm road on the north; SR-98 on the south; agricultural land on the east; and Greeson Drain Number 2 on the west. The Greeson Drain also aligns diagonally from the northwest to the southeast through CUP 13-0037. An area with several homes and structures borders the southern boundary of the CUP area adjacent to SR-98. Aside from roads and drains and the Centinela Solar Energy Project to the west, the entire CUP area is surrounded by agricultural land. CUP 13-0036 is proposed to the south of CUP 13-0037. The Electric Collector Line Corridor is proposed to align east-west along approximately two-thirds of the northern CUP border then align north-south along the western boundary.

Two primary and secondary access points are proposed to CUP 13-0037. Both primary access points are proposed off of Rockwood Road along the western boundary of the CUP area. One secondary access is proposed from the north off of the unnamed dirt farm road and the other is from the west off of Rockwood Road. The three access points off of Rockwood Road would cross IID's Greeson Drain Number 2 at existing vehicular access locations. The secondary access off the unnamed dirt farm road would require a new crossing of IID's Wistaria Drain. The electric line associated with CUP 13-0037 would extend south along Rockwood Road, over the Greeson Drain and SR-98 and through CUP 13-0036 to deliver electricity to the Gen-Tie. Substation and O&M facilities may be located in the southwest corner of the CUP area (**Figure 2.0-7**).

CUP 13-0038

CUP 13-0038 consists of one 162.93 acre parcel (refer to **Table 2.0-1**). The CUP area is bounded by Wistaria Lateral 5 and an unnamed dirt farm road on the north; Wistaria Lateral 4 and Kubler Road on the south; and an unnamed farm road on the east and Rockwood Road on the west. Aside from the roads and laterals, the CUP is also surrounded by farmland on all sides. CUP 13-0038 is proposed to the west of CUP 13-0039. The Electric Collector Line Corridor is proposed to extend east-west along the entire northern boundary as well as north-south along the western and eastern boundaries.

Three access points are proposed to CUP 13-0038. The two primary access points are proposed off of the unnamed dirt farm road on the east and Rockwood Road on the west of the CUP area. Both entrances are off of Kubler Road which is paved. The secondary access point is from Rockwood Road on the west. The electric line associated with CUP 13-0038 would extend south along the unnamed dirt farm road on the eastern boundary of CUP 13-0038, then align south (through APN 052-180-048), then connect with the Electric Collector Line Corridor as described in CUP 13-0037 to ultimately connect to the Gen-Tie. The Electric Collector Line Corridor will cross over IID's Wistaria Lateral 4 and IID Energy facilities. Substation and O&M facilities may be located in the southeast corner of the CUP area (**Figure 2.0-8**).

CUP 13-0039

CUP 13-0039 consists of two parcels totaling 161.2 acres (refer to **Table 2.0-1**). The CUP area is bounded by Wistaria Lateral 5 and an unnamed dirt farm road on the north; Wistaria Lateral 4 and Kubler Road on the south; George Road on the east; and an unnamed dirt farm road on the west. Two residences border the southern boundary: one residence is located at the southeast corner of the CUP area while the other is located centrally along the southern border of CUP 13-0039. The CUP is also surrounded by farmland

2.0 PROJECT DESCRIPTION

on all sides. CUP 13-0039 is proposed to the east of CUP 13-0038. The Electric Collector Line Corridor aligns north-south along the entire length of the western boundary.

One primary and secondary point of access is proposed to CUP 13-0039. The primary access would be off of the unnamed dirt farm road on the west near the southwestern corner of the CUP. There is an existing vehicular crossing of IID's Wistaria Lateral 4 near this access. The secondary access point would be from George Road near the northeast corner of the CUP. There is an existing vehicular crossing at Wistaria Lateral 4 and George Road. The electric line associated with CUP 13-0039 would extend south parallel to the unnamed dirt farm road along the western boundary, continue south through APN 052-180-048, then connect with the Electric Collector Line Corridor as described in CUP 13-0037 to ultimately connect to the Gen-Tie. The Electric Collector Line Corridor will cross IID's Wistaria Lateral 4 and energy facilities. Substation and O&M facilities may be located in the southwest corner of the CUP area (**Figure 2.0-9**).

CUP 13-0040

CUP 13-0040 consists of one 148.53 acre parcel (refer to **Table 2.0-1**). The CUP area is bounded by Wistaria Lateral 6 and Preston Road on the north; Wistaria Lateral 5 and an unnamed dirt road on the south; an unnamed dirt road on the east; and the Wistaria Drain 5 and Rockwood Road on the west. CUP 13-0040 is also surrounded by agricultural land on all sides. Three CUPs are proposed adjacent to CUP 13-0040: CUP 13-0041 is proposed to the west; CUP 13-0043 is proposed to the north; and CUP 13-0038 is proposed to the south. The Electric Collector Line Corridor is proposed along all four sides of the CUP area.

One primary and secondary point of access is proposed to CUP 13-0040. Both would be from the north off of Preston Road. The electric line associated with CUP 13-0040 would extend south along the unnamed dirt farm road. Electricity would flow from CUP 13-0040 through the Electric Collector Line Corridor for CUP 13-0038 or 13-0039 and then extend south through the Electric Collector Line Corridor as described in CUP 13-0038 or 13-0039 to connect to the Gen-Tie. The Electric Collector Line Corridor will cross IID's Wistaria Lateral 5, Drain 5 and energy facilities. Substation and O&M facilities may be located in the northeast corner of the CUP area (**Figure 2.0-10**).

CUP 13-0041

CUP 13-0041 consists of one 153.61 acre parcel (refer to **Table 2.0-1**). The CUP area is bounded by Wistaria Lateral 6 and Preston Road on the north; Wistaria Drain 5 and an unnamed dirt farm road on the south; Rockwood Road and the Wistaria Drain 5 on the east; and an unnamed dirt farm road on the west. The CUP area is surrounded by agricultural land on all sides. Three CUPs are proposed adjacent to CUP 13-0041: CUP 13-0042 is proposed to the west; CUP 13-0040 is proposed to the east; and CUP 13-0044 is proposed to the north. The Electric Collector Line Corridor is proposed to align east-west along approximately one-third of the eastern portion of the northern boundary of the CUP adjacent to Preston Road as well as the entire length of the southern boundary. The Corridor also extends north-south along the entire length of the eastern boundary of CUP 13-0041.

One primary and secondary point of access is proposed to CUP 13-0041. Both would be from the north off of Preston Road. The electric line associated with CUP 13-0041 would extend east across Rockwood Road and through CUP 13-0040 and CUP 13-0038 or 13-0039 and then extend south through the Electric Collector Line Corridor as described in CUP 13-0038 or 13-0039 to connect to the Gen-Tie. Substation and O&M facilities may be located in the northeast corner of the CUP area (**Figure 2.0-11**).

CUP 13-0042

CUP 13-0042 consists of five parcels totaling 231.32 acres (refer to **Table 2.0-1**). The CUP area is bounded by Wistaria Lateral 6 and Preston Road on the north; Wistaria Lateral 5 and an unnamed dirt farm road

on the south; an unnamed dirt farm road on the east; and IID operational discharge infrastructure, Brockman Road and Wistaria Lateral 6A on the west. The CUP is surrounded by farmland on all sides in addition to the Greeson Drain which aligns from the northeast to the southwest through the western-most portion of the CUP area. CUP 13-0042 is proposed to the west of CUP 13-0041. The Electric Collector Line Corridor is proposed to extend east-west along the majority of the CUP's southern border.

Three primary and three secondary access points are proposed to CUP 13-0042. Two of the primary and secondary access points are proposed off of the unnamed dirt farm road that aligns east-west through the western portion of the CUP area. The access points would be to the north and south off of this road. In addition, a primary and secondary access would extend to the west off of Brockman Road into the western-most portion of the CUP area west of Brockman Road. The solar field west of Brockman Road would require an electric line to cross Brockman Road and IID energy facilities along Brockman Road. The electric line associated with CUP 13-0042 would extend east along the southern boundary adjacent to the unnamed dirt farm road. From this point, the electric line would extend through CUP 13-0041, then align through CUP 13-0040 and CUP 13-0038 or 13-0039 and then extend south through the Electric Collector Line Corridor as described in CUP 13-0038 or 13-0039 to connect to the Gen-Tie. Substation and O&M facilities may be located centrally within the CUP area near Brockman Road and the unnamed dirt farm road aligning east-west (**Figure 2.0-12**).

CUP 13-0043

CUP 13-0043 consists of two parcels totaling 152.11 acres (refer to **Table 2.0-1**). The CUP area is bounded by the Wistaria Canal and Lyons Road on the north; Wistaria Lateral 6 and Preston Road on the south; the Wistaria Canal and George Road on the east; and Rockwood Road and the Wistaria Canal on the west. Aside from the roads and canals, the CUP is also surrounded by farmland on all sides. Two CUPs are proposed on either side of CUP 13-0043: CUP 13-0044 is proposed to the west and CUP 13-0045 is proposed to the east. The Electric Collector Line Corridor is proposed to extend the entire length of all four sides of the CUP area.

One primary and secondary point of access is proposed to CUP 13-0043 off of Lyons Road on the north. The electric line associated with CUP 13-0043 would extend south along George Road on the eastern boundary of the CUP area and continue south across Preston Road, through CUP 13-0040, CUP 13-0038 or CUP 13-0039, APN 052-180-048 and then connect with the Electric Collector Line Corridor as described in CUP 13-0037 to connect to the Gen-Tie. The Electric Collector Line Corridor will cross IID's Wistaria Lateral 6. Substation and O&M facilities may be located in the northeast corner of the CUP area (**Figure 2.0-13**).

CUP 13-0044

CUP 13-0044 consists of one 79.82 acre parcel (refer to **Table 2.0-1**). The CUP area is bounded by an unnamed dirt farm road to the north; Wistaria Lateral 6 and Preston Road on the south; Rockwood Road and the Wistaria Canal on the east; and an unnamed dirt farm road on the west. Aside from the roads, canals and laterals, the CUP area is surrounded by agricultural land on all sides. Three CUPs are proposed adjacent to CUP 13-0044: CUP 13-0043 is proposed to the east and CUPs 13-0041 and 13-0040 are proposed to the south. The Electric Collector Line Corridor is proposed to align north-south along the length of the entire eastern boundary and east-west along approximately one-half of the southern boundary.

One primary and secondary point of access is proposed to CUP 13-0044. Both would be from the east off of Rockwood Road. The electric line associated with CUP 13-0044 would extend east along Preston Road, then extend south across Preston Road and IID's Wistaria Lateral 6 and follow the Electric Collector Line

2.0 PROJECT DESCRIPTION

Corridor as described in CUP13-0040. Substation and O&M facilities may be located in the southeast corner of the CUP area (**Figure 2.0-11**).

CUP 13-0045

CUP 13-0045 consists of one 76.64 acre parcel (refer to **Table 2.0-1**). The CUP area is bounded by Lyons Road and the New River to the north; an unnamed dirt farm road on the south; New River on the east; and the Wistaria Canal and George Road on the west. The CUP area is surrounded by agricultural land on the north, south and west; the northeastern corner and eastern boundary are adjacent to the New River. CUP 13-0043 is proposed to the west of CUP 13-0045. The Electric Collector Line Corridor is proposed to align north-south along the length of the entire western boundary of the CUP area.

One primary and one secondary point of access is proposed to CUP 13-0045. Both would be from the north off of Lyons Road. The electric line associated with CUP 13-0045 would cross George Road into CUP 13-0043 and follow the Electric Collector Line Corridor identified in CUP 13-0043. Substation and O&M facilities may be located in the northwest corner of the CUP area (**Figure 2.0-11**).

CUP 13-0046

CUP 13-0046 consists of four parcels totaling 202.24 acres (refer to **Table 2.0-1**). The CUP area is bounded by the New River on the north; the Wistaria Canal and Lyons Road on the south; an unnamed dirt farm road on the east and the New River to the northeast; and the Wistaria Canal and Rockwood Road on the west. Agricultural land borders most of the north and east and all of the west and south sides of the CUP area. Four CUPs are proposed adjacent to CUP 13-0046: CUP 13-0047 is proposed to the north; CUP 13-0048 is proposed to the west; and, CUPs 13-0043 and 13-0045 are proposed to the south. The Electric Collector Line Corridor is proposed to extend north-south along the western boundary of the CUP area as well as east-west along the southern boundary.

One primary and secondary point of access is proposed to CUP 13-0046. The Primary Access would be off of Rockwood Road on the west and the secondary point of access would be from Lyons Road on the south. The primary access point off Rockwood Road contains two existing crossings of IID's Wistaria Lateral 7. The electric line associated with CUP 13-0046 would extend east along Lyons Road, turn south and cross Lyons Road and IID's Wistaria Lateral 7 extending under SDG&E's Southwest Powerlink, and align south along George Road to follow the Electric Collector Line Corridor identified in CUP 13-0043. Substation and O&M facilities may be located in the southwest corner of the CUP area (**Figure 2.0-16**).

CUP 13-0047

CUP 13-0047 consists of three parcels totaling 131.89 acres (refer to **Table 2.0-1**). The CUP area is bounded by the New River on the north; Wahl Road on the south; New River on the east; and the Wistaria Canal on the west. Rockwood Road terminates at the southern border of the CUP. Agricultural land surrounds the CUP area on all sides. CUP 13-0046 is proposed to the south of CUP 13-0047. The Electric Collector Line Corridor is proposed to extend north-south from the southern portion of the CUP 13-0047 along Rockwood Road.

One primary and one secondary point of access is proposed to CUP 13-0047. Both are from the south, off of Wahl Road and require crossing over an existing crossing of IID's Wistaria Canal. The electric line associated with CUP 13-0047 would extend south along Rockwood Road and follow the corridor described in CUP 13-0046. Substation and O&M facilities may be located in the southwest corner of the CUP area (**Figure 2.0-17**).

CUP 13-0048

CUP 13-0048 consists of one 160 acre parcel (refer to **Table 2.0-1**). The CUP area is bounded by Wahl Road to the north; Wistaria Lateral 7 and Lyons Road on the south; the Wistaria Canal and Rockwood Road on the east; and an unnamed farm road on the west. The CUP area is surrounded by agricultural land on all sides. Two CUPs are proposed on either side of CUP 13-0048: CUP 13-0049 is proposed to the west and CUP 13-0046 is proposed to the east. The Electric Collector Line Corridor is proposed to align north-south along the length of the eastern boundary and east-west along the southern boundary of the CUP area.

One primary and secondary point of access is proposed to CUP 13-0048. The primary access would be off of Rockwood Road on the east which utilizes an existing crossing over IID's Wistaria Lateral 7 and the secondary access is proposed off of Wahl Road on the north. The electric line associated with CUP 13-0048 would extend south along Rockwood Road and follow the corridor described in CUP 13-0046. Substation and O&M facilities may be located in the southeast corner of the CUP area (**Figure 2.0-18**).

CUP 13-0049

CUP 13-0049 consists of two parcels totaling 159.9 acres (refer to **Table 2.0-1**). The CUP area is bounded by Wahl Road on the north; Wistaria Drain 7 and Lyons Road on the south; an unnamed farm road on the east; and Brockman Road on the west. Agricultural land surrounds the CUP area on all sides with the Meloland Cattle Company immediately to the west across Brockman Road. CUP 13-0048 is proposed to the east of CUP 13-0049. The Electric Collector Line Corridor is proposed to extend east-west along approximately one-third of the southern boundary adjacent to Lyons Road.

One primary and secondary point of access is proposed to CUP 13-0049. Both would be from the west off of Brockman Road and over a private drain easement. The electric line associated with CUP 13-0049 would extend east along Lyons Road and follow the corridor outlined in CUP 13-0048. Substation and O&M facilities may be located in the southeast corner of the CUP area (**Figure 2.0-19**).

CUP 13-0050

CUP 13-0050 consists of one 123.54 acre parcel (refer to **Table 2.0-1**). The CUP area is bounded by Anza Road to the north; the All American Canal (Drain Number 12) and the U.S-Mexico Border on the south; the Woodbine Canal and Mandrapa Road on the east; and Rockwood Road on the west. The CUP area is surrounded by agricultural land on the north, east and west. However, some of these lands have been permitted for solar energy generation as part of the Mount Signal and Calxico Solar Farm Projects. CUP 13-0051 is proposed to the east of CUP 13-0050. The Electric Collector Line Corridor is proposed to align north-south along approximately one-half the length of the western boundary and east-west along the entire northern boundary of the CUP area.

One primary and one secondary point of access is proposed to CUP 13-0050. The primary and secondary access locations would be from the north off of Anza Road. The electric line associated with CUP 13-0050 would extend west along Anza Road then turn north crossing Anza Road and IID Energy facilities and extend north along Rockwood Road to either the substation/switchyard located at CUP 13-0036 or the Gen-Tie. Substation and O&M facilities may be located in the northwest corner of the CUP area (**Figure 2.0-20**).

CUP 13-0051

CUP 13-0051 consists of one 241.98 acre parcel (refer to **Table 2.0-1**). The CUP area is bounded by Anza Road to the north; the All American Canal (Drain Number 12) and the U.S-Mexico Border on the south; the Greeson Drain on the east; and the Woodbine Canal and Mandrapa Road on the west. The CUP area is surrounded by agricultural land on the north, east and west. However, some of the lands to the north have been permitted for solar energy generation as part of the Mount Signal and Calxico Solar Farm

2.0 PROJECT DESCRIPTION

Projects. Two CUPs are proposed on either side of CUP 13-0051: CUP 13-0050 is proposed to the west and CUP 13-0052 is proposed to the east. The Electric Collector Line Corridor is proposed to align east-west along the entire northern boundary of the CUP area.

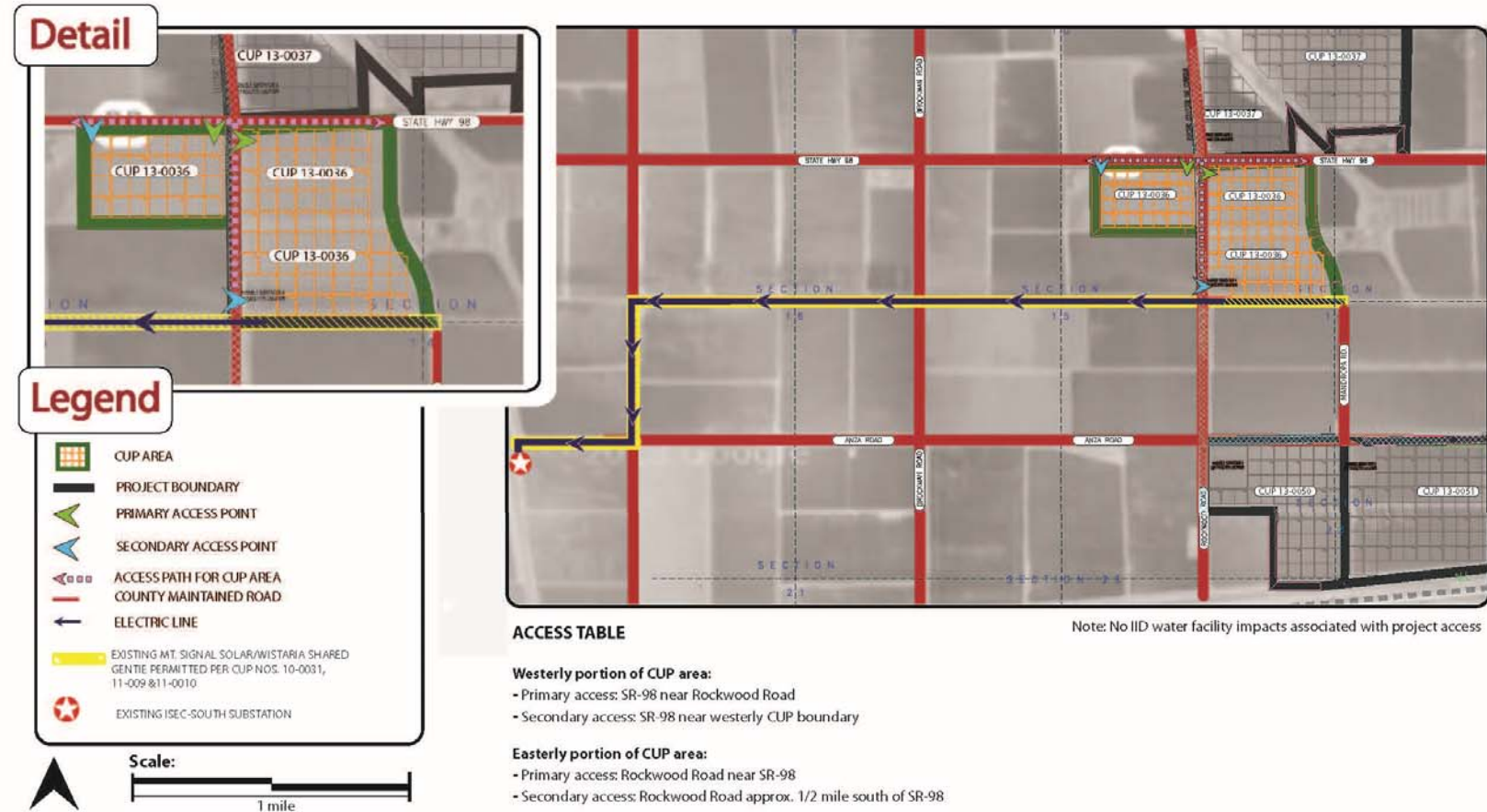
One primary and secondary point of access is proposed to CUP 13-0051. The primary and secondary access locations would be from the north off of Anza Road. The electric line associated with CUP 13-0051 would extend west along Anza Road across Mandrapa Road, the Woodbine Canal, and IID Energy facilities and follow the Electric Collector Line Corridor associated with CUP 13-0050. Substation and O&M facilities may be located in the northwest corner of the CUP area (**Figure 2.0-21**).

CUP 13-0052

CUP 13-0052 consists of one 194.05 acre parcel (refer to **Table 2.0-1**). The CUP area is bounded by Wistaria Lateral 1 and Anza Road to the north; the All American Canal (Drain Number 11) and the U.S-Mexico Border on the south; Ferrell Road on the east; and the Greeson Drain on the west. The CUP area is surrounded by agricultural land on the north, east and west. However, some of these lands have been permitted for solar energy generation as part of the Mount Signal and Calxico Solar Farm Projects. CUP 13-0051 is proposed to the west. The Electric Collector Line Corridor is proposed to align east-west along the entire northern boundary of the CUP area.

One primary and one secondary point of access is proposed to CUP 13-0052. The primary and secondary access locations would be from the north off of Anza Road. The electric line associated with CUP 13-0052 would extend west along Anza Road across the Greeson Drain and IID Energy facilities and then follow the corridor described in CUP 13-0051. Substation and O&M facilities may be located in the northwest corner of the CUP area (**Figure 2.0-22**).

CUP 13-0036

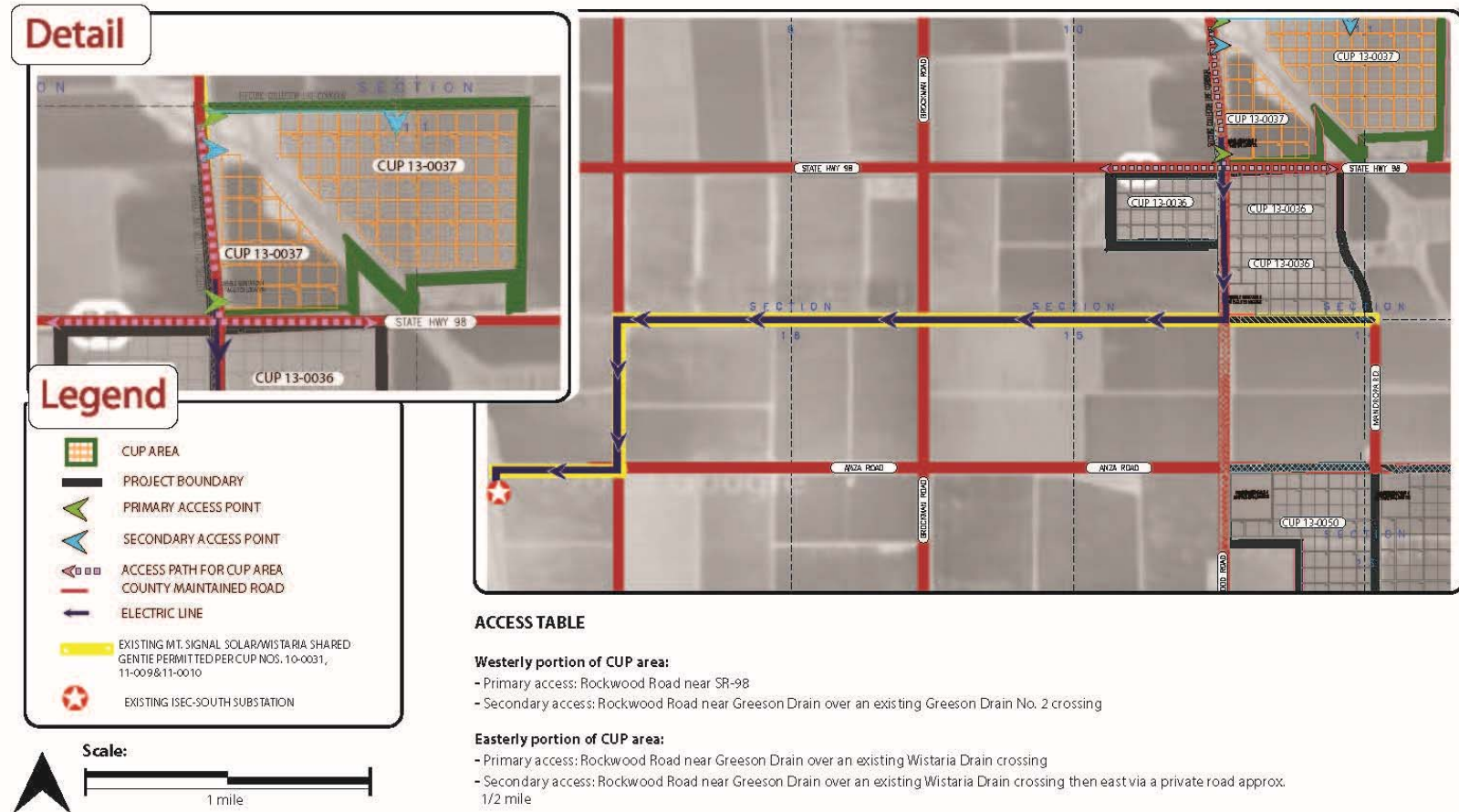


Source: DD&E 2014a.

FIGURE 2.0-6
CUP 13-0036 – ACCESS POINT AND ELECTRICAL FLOW DIAGRAM

2.0 PROJECT DESCRIPTION

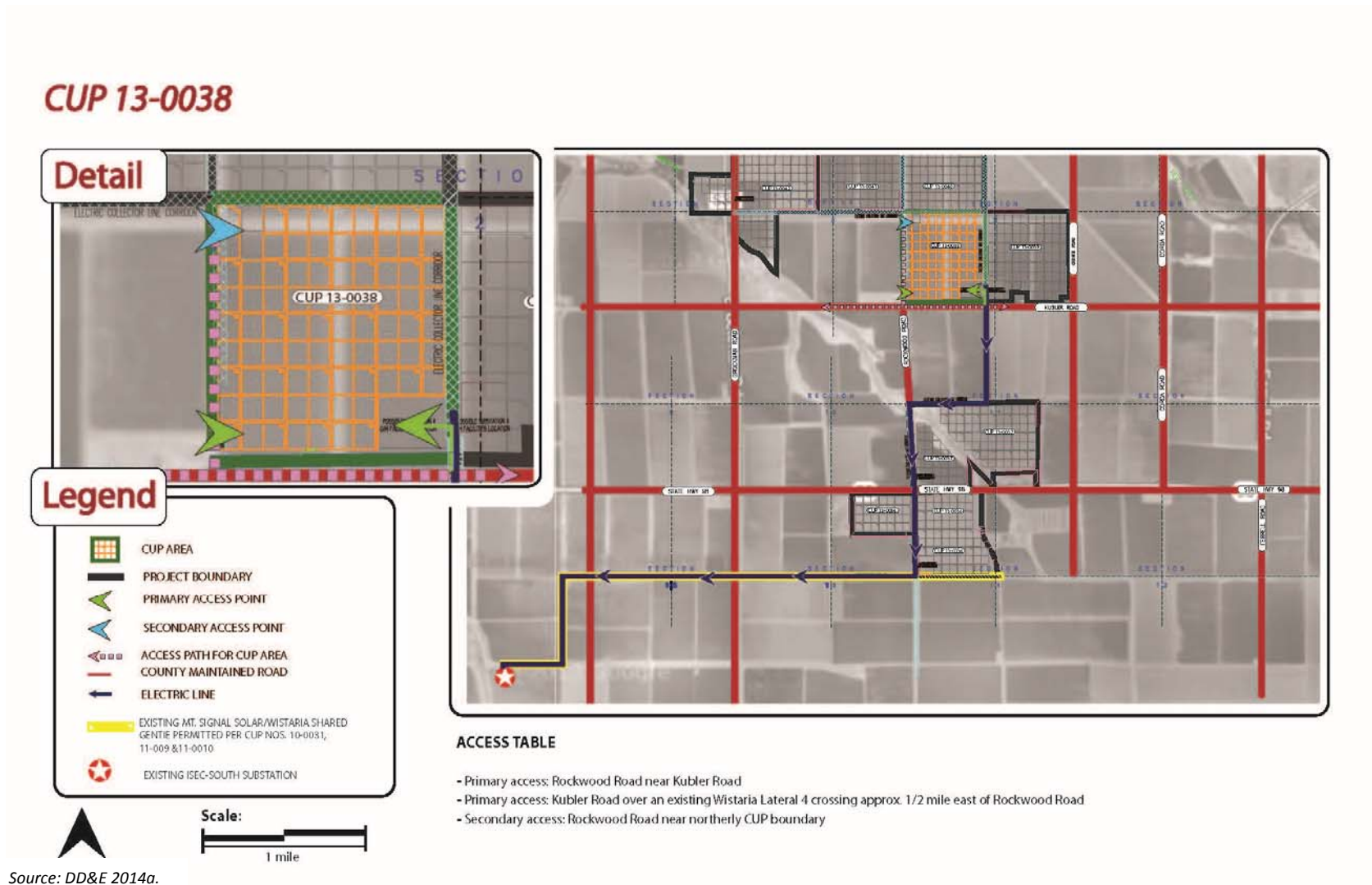
CUP 13-0037



Source: DD&E 2014a.

FIGURE 2.0-7
CUP 13-0037 – ACCESS POINT AND ELECTRICAL FLOW DIAGRAM

2.0 PROJECT DESCRIPTION



Source: DD&E 2014a.

FIGURE 2.0-8
CUP 13-0038 – ACCESS POINT AND ELECTRICAL FLOW DIAGRAM