

APPENDIX A



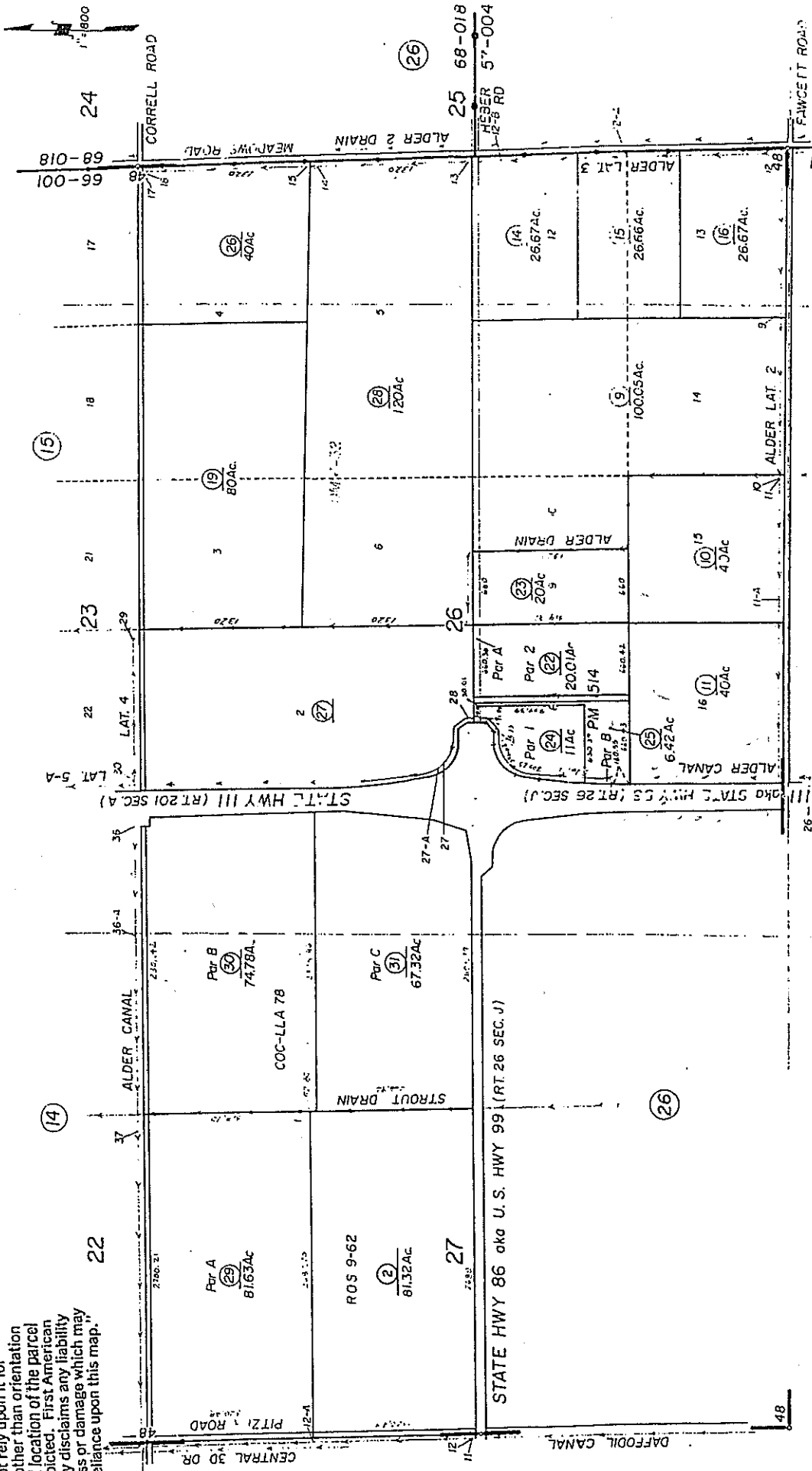
LEGAL DESCRIPTION

THE LAND REFERRED TO HEREIN IS SITUATED IN THE STATE OF CALIFORNIA, COUNTY OF IMPERIAL, AND IS DESCRIBED AS FOLLOWS:

THAT PORTION OF TRACT 48, TOWNSHIP 16 SOUTH, RANGE 14 EAST, SAN BERNARDINO MERIDIAN, IN AN UNINCORPORATED AREA OF THE COUNTY OF IMPERIAL, STATE OF CALIFORNIA, ACCORDING TO THE OFFICIAL PLAT THEREOF, SHOWN AND INDICATED AS LOT 2 ON MAP NO. 361 IN BOOK 6, PAGE 32 OF OFFICIAL MAPS ON FILE IN THE OFFICE OF THE COUNTY RECORDER OF IMPERIAL COUNTY.

EXCEPTING THEREFROM THAT PORTION CONVEYED TO THE STATE OF CALIFORNIA BY DEED RECORDED APRIL 20, 1964 IN BOOK 1181, PAGE 1060 OF OFFICIAL RECORDS.

This map may or may not be a true and correct survey of the land depicted hereon. You should not rely upon it for any purpose other than orientation to the general location of the parcel parcels depicted. First American Title Expressly disclaims any liability for alleged loss or damage which may result from reliance upon this map.



34

DISCLAIMER:
THIS IS NOT AN OFFICIAL MAP.
THIS MAP WAS CREATED FOR THE IMPERIAL COUNTY ASSESSOR, FOR THE SOLE PURPOSE OF AIDING IN THE PERFORMANCE OF THE DUTIES OF THE ASSESSOR. IT DOES NOT CONSTITUTE A WARRANTY OF ANY KIND, EITHER EXPRESS OR IMPLIED, BY THE ASSESSOR. (REV. 3 TAK. CODE SEC. 322)

12-20-91 LS
10-29-92 LS
3-25-93 DP
12-7-93 LS

NOTE - Assessors Block Numbers Change in Certain Areas
Assessors Block Numbers Change in Certain Areas

Assessor's Map Bk. 54-Pg 24
County of Imperial, Calif.

