



McCabe Ranch Subdivision Tentative Tract Map No. 952

IN AN UNINCORPORATED AREA OF THE COUNTY OF IMPERIAL, STATE OF CALIFORNIA

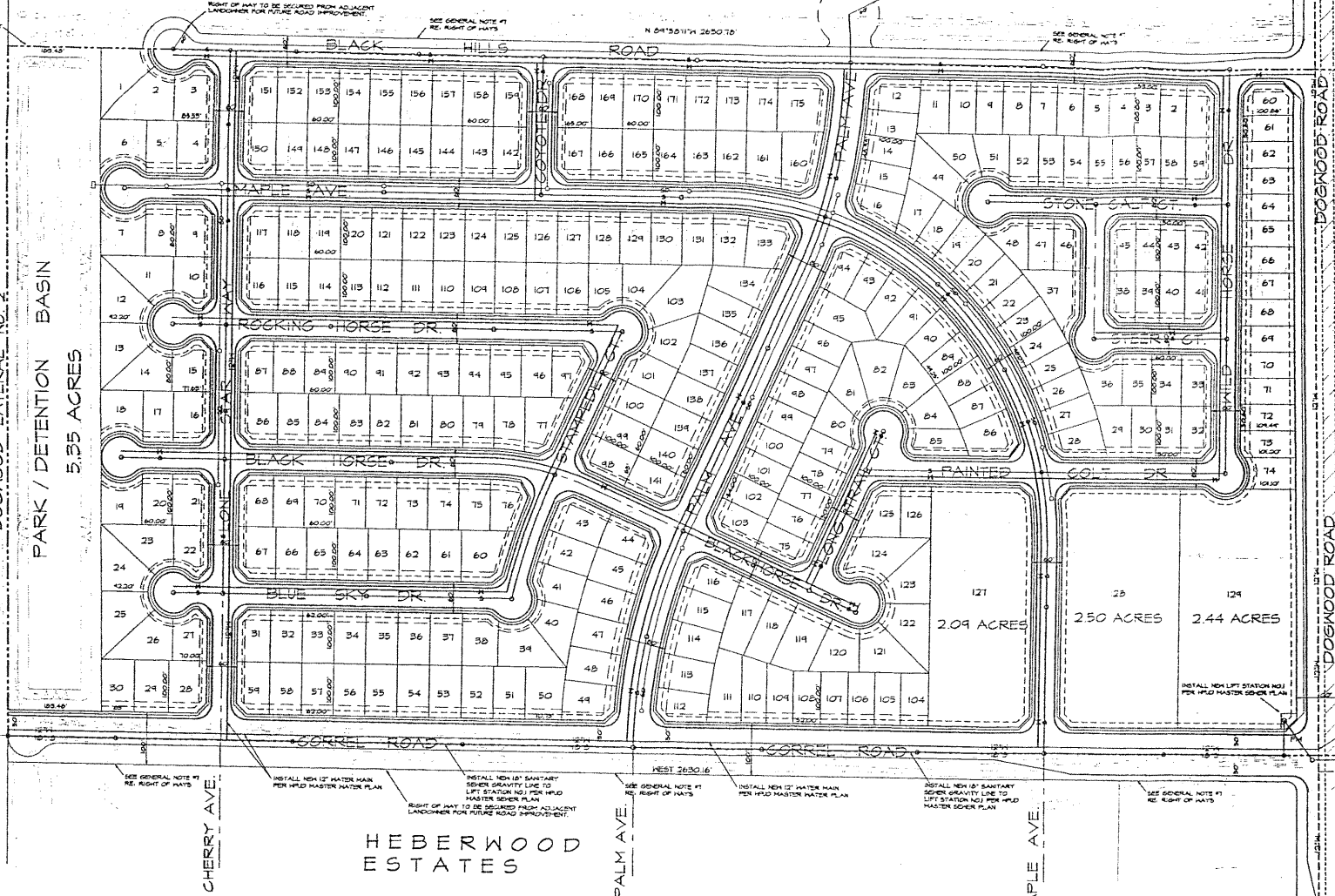
EASEMENT TO BE SECURED FROM ADJACENT LANDOWNER FOR TEMPORARY TRAIL-AROUND (VALD) USE, FURTHER ROAD IMPROVEMENTS OR PLANS OF ANOTHER SUBDIVISION MAP OVER THIS AREA.

TR. 65

DATE DRAIN NO. 3
N 00°30'34" W 1833.7'

DOGWOOD LATERAL No. 2

PARK / DETENTION BASIN
5.35 ACRES



LEGEND:

- | | |
|--|--------------------------------|
| ○ SURVEY POINT | EXISTING CENTER |
| — STREET LINE | — DIRECTION OF FLOW |
| — NEW 12" WATER LINE
ELECTRA NOTED OTHERWISE | — EXISTING WATER LINE |
| — NEW 8" SANITARY SEWER LINE
MATERIAL NOTED OTHERWISE | — EXISTING SANITARY SEWER LINE |
| — NEW 6" FIRE MAIN | — EXISTING STORM DRAIN LINE |
| — NEW 18" STORM DRAIN LINE | — EXISTING PAVED |
| — SPOT ELEVATION | — SUBDIVISION BOUNDARY |
| — PUBLIC UTILITY EASEMENT | |
| — PLANNING SETBACK LINE | |

HEBERWOOD
ESTATES

CORRELL
ESTATES

BENCH MARK

LOCATED 70' ON THE WEST JUST
WING WALL OF BRICK & CON.
45' AT ON THE DOGWOOD CANAL.
BL 4325

DEVELOPMENT DESIGN & ENGINEERING, LLC
PLANNING - CIVIL - ELECTRICAL - LAND SURVEYING - PROJECT MANAGEMENT

122 STATE STREET
EL CENTRO, CALIFORNIA 92549
PH: 760-859-9100
FAX: 760-859-8408

TENTATIVE TRACT MAP NO. 952
McCabe Ranch Subdivision
IN TRACT 66, T14 S, R14 E, S18N
IMPERIAL COUNTY, CALIFORNIA