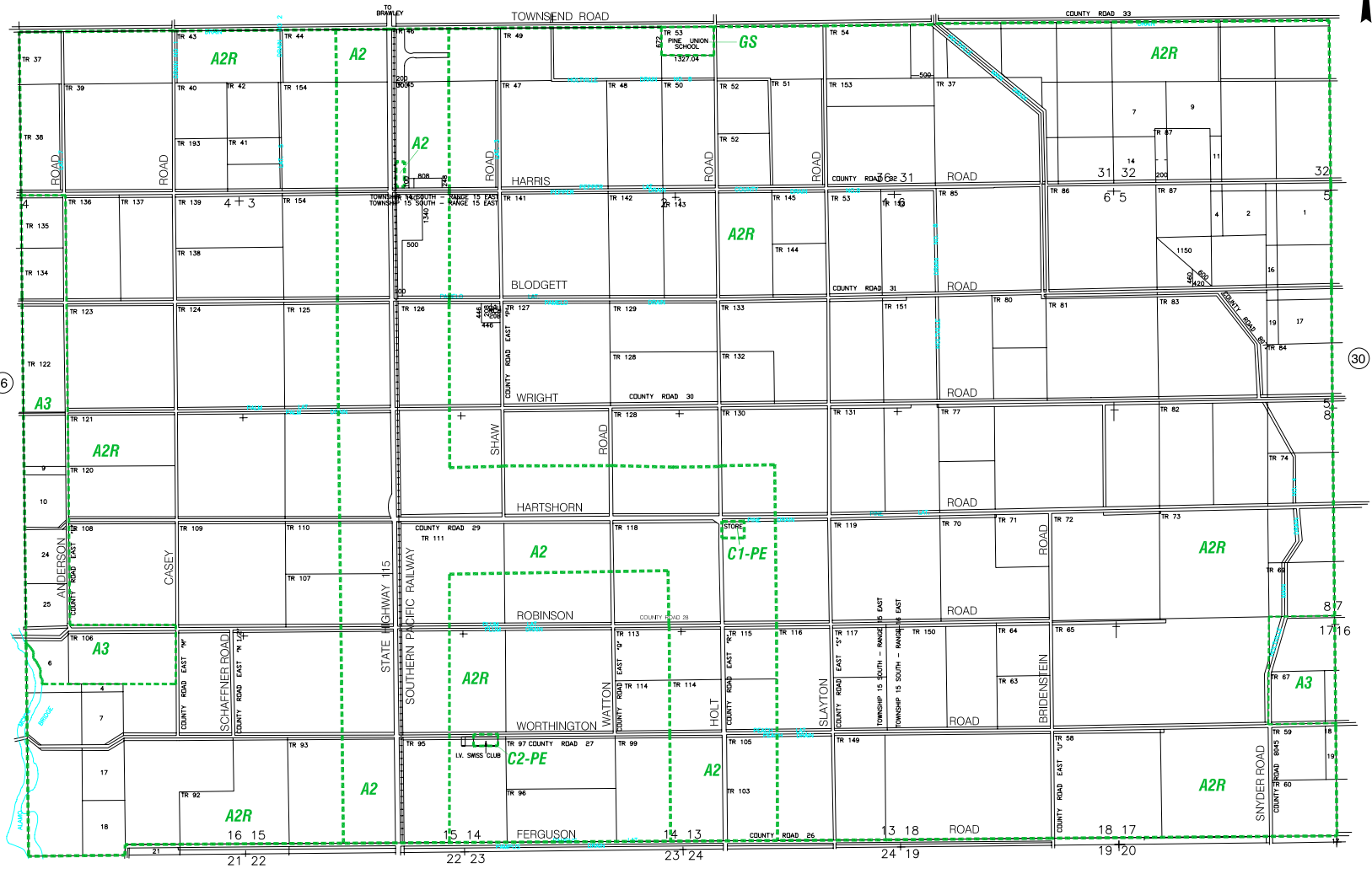


16

31

4



NOTE: Efforts have been made to insure zoning accuracy; however, this map may be revised at any time. Therefore this map is generally accurate, for zoning information only! Neither the County of Imperial nor the Planning/Building Department are responsible for erroneous information or improper use of this map.
 Adopted by M. O. # 15 (g) on Feb. 10, 1998 effective July 1, 1998.

Director

Revision Dates:
 July 24, 2001

PINE UNION SCHOOL SANDIA AREA

Title 9 Division 25 Section 92629.00

MAP 29