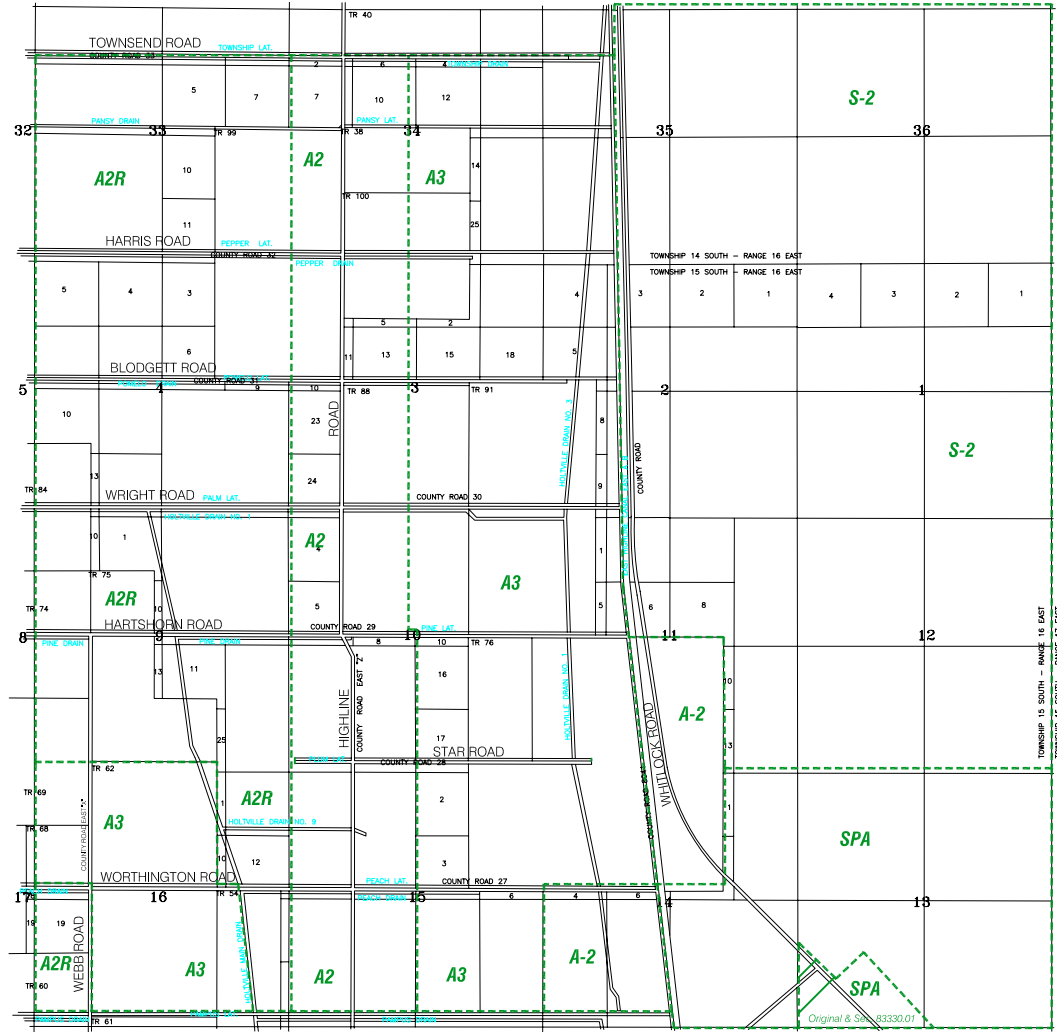


29

32

22



NOTE: Efforts have been made to insure zoning accuracy; however, this map may be revised at any time. Therefore this map is generally accurate, for zoning information only! Neither the County of Imperial nor the Planning/Building Department are responsible for erroneous information or improper use of this map.

Adopted by M. O. # 15 (h) on Feb. 10, 1998 effective July 1, 1998.

Director

Revision Dates:

July 24, 2001

SANDIA EAST AREA

Title 9 Division 25 Section 92530.00

MAP 30